



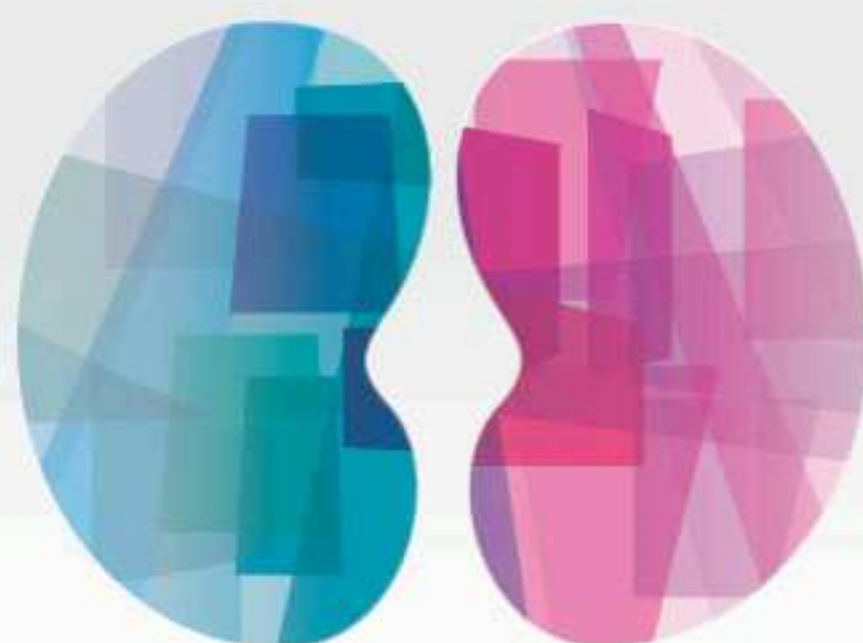
KSN 2018

Seoul, Korea · May 17 - 20

**The 38th Annual Meeting of
the Korean Society of Nephrology**

Grand Hilton Seoul, Seoul, Korea

A New Milestone for Nephrology



Platinum Sponsors

Baxter

**FRESENIUS
MEDICAL CARE**

Gold Sponsors

Roche

KYOWA KIRIN

CJ HealthCare

Otsuka

SK chemicals

JW Pharmaceutical

BORYUNG

HANJOK

PROGRAM BOOK

HDxTHERAPY

ENABLED BY THE THERANOVA



APD SIMPLE & SMART THERAPY

Homechoice *Claria*



CRRT

Continuous Renal Replacement Therapy



SAVE with MIRCERA®

MIRCERA® saves valuable moments for patients with CKD and healthcare professionals.



* CKD : Chronic kidney disease

References 1. MIRCERA® product information 2. De Cock, et al. Time-and-motion study of C.E.R.A. once monthly. *Journal of Medical Economics*. 2013;16(5):648-656. 3. Ulrich Saueressag, et al. Healthcare Resource Utilization for Anemia Management: Current Practice with Erythropoiesis-Stimulating Agents and the Impact of Converting to Once-Monthly C.E.R.A. *Blood Purif* 2008;26:537. 4. Weinreich T, et al. on behalf of the SESAM study group. Monthly continuous erythropoietin receptor activator treatment maintains stable hemoglobin levels in routine clinical management of hemodialysis patients. *Hemodialysis International* 2012;16:11-19.

MIRCERA® pre-filled syringe

Prescription medicine, classification number 249

300 µg/0.3mL, 500 µg/0.3mL, 750 µg/0.3mL, 1000 µg/0.3mL, 1200 µg/0.3mL, 1500 µg/0.3mL, 2000 µg/0.3mL, 2500 µg/0.3mL, 3000 µg/0.3mL (Methoxy Polyethylene glycol-epoetin beta)
 Host cell : CHO cell / Expression vector : DN-3
 Excipients: Stabilizers (Sodium sulphate, Polysorbate 188), Sodium dihydrogen phosphate monohydrate, Mannitol (E421), Methionine, Hydrochloric acid, Sodium hydroxide, Solvent (Water for injections)

Pharmaceutical Form: Solution for injection in pre-filled syringe (injection). The solution is clear and colorless to slightly yellowish. **Therapeutic indication:** Treatment of symptomatic anemia associated with chronic kidney disease (CKD) in adult patients. **Method of administration and dosage:** MIRCERA should be administered either subcutaneously or intravenously. It can be injected subcutaneously in the abdomen, arm or thigh. Treatment with MIRCERA is normally long-term. However, it can be interrupted at any time, if necessary. It is recommended that hemoglobin is monitored every two weeks until stabilized and periodically thereafter. If one dose of MIRCERA is missed, the missed dose is to be administered as soon as possible and administration of MIRCERA is to be restarted at the prescribed dosing frequency. 1. Patients currently not treated with an erythropoiesis stimulating agent (ESA): In order to increase hemoglobin levels to greater than 10 g/dL (6.21 mmol/L), the recommended starting dose in patients on dialysis and patients not on dialysis is 0.5 µg/kg on every 2 weeks administration (SC or IV). If patient is not on dialysis, starting dose can be 1.2 µg/kg body weight, administered once every month as a single subcutaneous injection. The dose may be increased by approximately 25% of the previous dose if the rate of rise in hemoglobin is less than 1.0 g/dL (0.621 mmol/L) over a month. Further increases of approximately 25% may be made at monthly intervals until the individual target hemoglobin level is obtained. If the rate of rise in hemoglobin is greater than 1.2 g/dL (0.74 mmol/L) in one month or if the hemoglobin level is increasing and approaching 12 g/dL (7.45 mmol/L), the dose is to be reduced by approximately 25%. If the hemoglobin level continues to increase, therapy should be interrupted until the hemoglobin level begins to decrease, at which point therapy should be reduced approximately 25% from the previously administered dose. After dose interruption a hemoglobin decrease of approximately 0.35 g/dL (0.22 mmol/L) per week is expected. Dose adjustments should not be made more frequently than once a month. Patients treated once every two weeks whose hemoglobin concentration is above 10 g/dL (6.21 mmol/L) may receive MIRCERA administered once monthly using the dose equal to twice the previous once every two week dose. 2. Patients currently treated with an ESA: Patients currently treated with an ESA can be switched to MIRCERA administered once a month as a single intravenous or subcutaneous injection. The starting dose of MIRCERA is based on the calculated previous weekly dose of darbepoetin alfa or epoetin at the time of substitution as described in Table 1. The first injection should start at the next scheduled dose of the previously administered darbepoetin alfa or epoetin.

Table 1. MIRCERA starting doses

Previous weekly darbepoetin alfa intravenous or subcutaneous dose (microgram/week)	Previous weekly epoetin intravenous or subcutaneous dose (IU/week)	Monthly MIRCERA intravenous or subcutaneous dose (microgram/once monthly)
< 40	< 8000	100
40 – 80	8000 – 16000	200
> 80	> 16000	300

If a dose adjustment is required to maintain the target haemoglobin concentration above 10 g/dL (6.21 mmol/L), the monthly dose may be increased by approximately 25% if the rate of rise in haemoglobin is greater than 1.2 g/dL (0.74 mmol/L) over a month or if the haemoglobin level is increasing and approaching 12 g/dL (7.45 mmol/L), the dose is to be reduced by approximately 25%. If the haemoglobin level continues to increase, therapy should be interrupted until the haemoglobin level begins to decrease, at which point therapy should be reduced approximately 25% from the previously administered dose. After dose interruption a haemoglobin decrease of approximately 0.35 g/dL (0.22 mmol/L) per week is expected. Dose adjustments should not be made more frequently than once a month. Since the treatment experience is limited in patients on peritoneal dialysis, regular haemoglobin monitoring and strict adherence to dose adjustment guidance are recommended in these patients. **Precautions for use:** Special warnings: 1. It should be injected the dose keeps maintaining a certain dose for minimum haemoglobin concentration without RBC transfusion. 2. In patients with chronic kidney disease, maintenance haemoglobin concentration should not exceed the upper limit of the target haemoglobin concentration recommended. In clinical trials, an increased risk of death, serious cardiovascular events including thrombosis or cerebrovascular events including stroke was observed when ESAs were administered to target haemoglobin of greater than 12 g/dL (7.5 mmol/L). 3. In patients with advanced renal and neck cancer with radiotherapy, metastatic breast cancer with chemotherapy and progressive cancer without chemotherapy and radiotherapy, ESAs were administered to target a haemoglobin of greater than 12 g/dL shorten the time of tumor progression and increase the risk of death. 4. Patients receiving ESAs pre-operatively for reduction of allogeneic red blood cell transfusions: A higher incidence of deep venous thrombosis was documented. **Contraindications:** 1. Hypersensitivity to the active substance or to any of the excipients. 2. Uncontrolled hypertension. **Precautions for following types of patients who are with:** 1. Severe liver disease. 2. Haemoglobinopathies. 3. Seizures. 4. Recent history of bleeding or bleeding requiring transfusions or with platelet levels greater than 500 x 10⁹/L.

MIRCERA-2015-10-22-1.6

Roche Korea. 17th Floor, GT Tower(East), 411, Seocho-daero, Seocho-gu, Seoul

1) For more detailed product information and/or to report an adverse event, please contact Roche Korea (02-3451-3600)

2) For the latest product information, please visit Roche Korea website at www.roche.co.kr.

MIRCERA®
methoxy polyethylene glycol-epoetin beta

REGPARA®

Cinacalcet HCl 25mg

Treatment for *SHPT*



☑ iPTH

☑ Calcium

☑ Phosphorus

☑ Calcium x Phosphorus

제품개요

레그파라의 주성분인 시나칼세트는 칼슘유사작용성 화합물(Calcimimetics) 제제로서 부갑상선 주세포 표면에서 세포외 칼슘에 대한 칼슘 감지 수용체의 민감도를 증가시켜 부갑상선호르몬(PTH) 분비를 직접적으로 감소시켜 줍니다. 시나칼세트의 분자식은 $C_{20}H_{27}FN \cdot HCl$ 로서 분자량은 염산염으로서 393.9g/mol입니다. 구조 중에는(R) 절대배열(absolute configuration)을 가진 한 개의 키랄 중심(chiral center)이 있고, 광학이성질체로서는 R형이 강력하여 약리작용면에서도 주요한 역할을 담당합니다.

조성·성상

제품명	레그파라정 25mg
유효성분	1정 중 시나칼세트 염산염 27.55mg (시나칼세트로서 25mg)
색·형태	담녹색~담황녹색의 필름코팅정
외형	암면 (KR 02) 뒷면 (KR 02) 측면 (KR 02)

효능·효과

투석을 받고 있는 만성신부전 환자와 관련된 이차성 부갑상선 기능 항진증의 치료

용법·용량

본 약제의 경우 투여시, 분할하여 복용하지 않습니다. 개시 용량으로서는, 성인에게는 1일 1회 시나칼세트로서 25mg을 경구 투여합니다. 이후는, 환자의 부갑상선 호르몬(iPTH) 및 혈청 칼슘 농도를 모니터링하면서 혈청 칼슘치 또는 부갑상선호르몬(iPTH)을 기준으로, 1일 1회 25, 50, 75mg으로 용량을 조정하여, 경구 투여합니다. 다만, 부갑상선호르몬(iPTH)의 개선이 확인되지 않는 경우에는, 1회100mg을 상한으로서 경구 투여합니다. 증량을 실시하는 경우는 증량폭을 25mg로 하여, 3주간의 간격을 두고 실시합니다.

- 이약은 혈중 칼슘의 저하 작용을 가지므로, 혈청 칼슘치가 낮지 않은 것(기준으로서 9.0mg/dL이상)을 확인하고 투여를 개시해야 합니다.
- 혈청 칼슘치는, 본 약제의 개시시 및 용량 조정시는 주 1회 측정하고, 유지기에는 2주에 1회이상 측정하고, 혈청 칼슘치가 8.4mg/dL 미만으로 낮아졌을 경우는, 아래 표와 같이 대응해야 합니다.

혈청칼슘치	처치	대응
8.4mg/dL 미만	본 약제의 투여 원칙으로서 본 약제의 용량을 유지합니다. (필요시 본 약제를 중단합니다.)	증량할 경우에는 8.4mg/dL 이상으로 회복 된 것을 확인후, 중단합니다.
7.5mg/dL 미만	증량폭을 25mg로 하여, 3주간의 간격을 두고 투여합니다.	증량할 경우에는 8.4mg/dL 이상으로 회복 된 것을 확인후, 중단하여 용량을 다시 7.5mg/dL 이하로 낮추어야 합니다.

혈청 칼슘치의 감사는, 본제의 약효 및 안전성을 적절하게 판단하기 위해서, 복용전에 실시하는 것이 바람직합니다. 또, 저알부민혈증(혈장알부민치가 4.0 g/dL 미만의 경우)에는, 보정치를 지표로 이용하는 것이 바람직합니다. 보정 칼슘치 산출 방법 : 보정 칼슘치(mg/dL) = 혈청 칼슘치(mg/dL) - 혈장알부민치(g/dL) × 4.0 (Guidelines for the management of secondary hyperparathyroidism in chronic dialysis patients, 39,10(2006):1440)

사용상의 주의사항

- 경고
 - 경력발작: 해와 임상시험에서, 경련 발작의 병력이 있는 환자등에서 경련 발작이 발생했다는 보고가 있습니다.
- 저혈압 및 심부전 악화: 외국의 시판후 조사에서 심부전 환자에서 저혈압 및 심부전 악화가 보고되었으며, 이 부작용은 이 약과의 상관성을 배제할 수 없으며, 혈중 칼슘 농도 감소에 의한 것으로 여겨집니다. 임상시험 결과는 이 약 투여환자의 7%와 위약 투여 환자의 12%에서 저혈압이 발생하였으며, 심부전은 이 약 또는 위약 투여 환자의 2%에서 발생하였습니다.

‘투석 시작’ 시기를 지연시키는 신부전 진행억제제¹

씨제이 **크레메진**[®] 세립
K R E M E Z I N

투석 시작 시기 지연¹

요독증 개선 및 완화²

QOL 향상³

사회·경제적 이득효과³

Slow ADPKD. Preserve Hope.

Introducing Samsca — The first and only treatment proven to slow cyst progression



Samsca® Tablet ADPKD product information summary [INDICATION] To slow the progression of cyst development and renal insufficiency of autosomal dominant polycystic kidney disease (ADPKD) in adults with CKD stage 1 to 3 at initiation of treatment with evidence of rapidly progressing disease. **[DOSAGE & ADMINISTRATION]** Tolvaptan must only be prescribed by physicians who got registered in Risk Management Program to the patients who have agreed and signed on conditions specified in Risk Management Program. Patient should follow this program. And, to mitigate the risk of significant and/or irreversible liver injury, blood testing for hepatic transaminases and bilirubin is required prior to initiation of SAMSCA, continuing monthly for 18 months and at regular 3 monthly intervals thereafter. The initial dose is 60 mg tolvaptan per day as a split-dose regimen of 45 mg + 15 mg (45 mg taken upon waking and prior the morning meal and 15 mg taken 8 hours later). The initial dose is to be titrated upward to a split-dose regimen of 90 mg tolvaptan (60 mg + 30 mg) per day and then to a target split-dose regimen of 120 mg tolvaptan (90 mg + 30 mg) per day, if tolerated, with at least weekly intervals between titrations. Dose titration has to be performed cautiously to ensure that high doses are not poorly tolerated through overly rapid up-titration. Patients may down-titrate to lower doses based on tolerability. Patients have to be maintained on the highest tolerable tolvaptan dose. ※ Samsca® Tablet has an indication for hyponatremia as well. For further information, please refer to the latest prescribing information at www.otsuka.co.kr.



Otsuka
Korea Otsuka Pharm.

Under license of Otsuka Pharmaceutical Co., Ltd.

Otsuka Vision Bldg., 226, Yeoksam-ro, Gangnam-gu, Seoul, 06227, Republic of Korea
Tel +82-2-3287-9000 / Fax +82-2-3287-9069 / www.otsuka.co.kr / Customer Call +82-080-558-2036



0-SAM-17-ADPKD-012-01 / May, 2017

The Right Key

to High Bleeding Risk Patients in HD & CRRT!



HD: hemodialysis, CRRT: continuous renal replacement therapy

FUTHAN is an anticoagulant during extracorporeal blood circulation in patients with bleeding complications or bleeding tendency.¹

- Due to its short half life (5~8 min), its anticoagulant activity is almost limited to extracorporeal circuit.^{2,3,4}
- Increase of bleeding risk was not noted in HD patients with bleeding risk.^{5,6,7}
- The filter-life is significantly prolonged during CRRT^{8,9}

FUTHAN Inj.



Summary of Prescribing Information

[PRODUCT NAME IN KOREA] • Futhan for Inj. (naloxone mesilate) • Futhan50 for Inj. (naloxone mesilate) **[INGREDIENT]** • Futhan for Inj. : 1 vial contains 10mg of naloxone mesilate • Futhan50 for Inj. : 1 vial contains 50mg of naloxone mesilate **[INDICATION AND USAGE]** 1. For improvement of acute symptoms of pancreatitis (acute pancreatitis, acute exacerbation of chronic pancreatitis, acute postoperative pancreatitis, ERCP-induced acute pancreatitis, traumatic pancreatitis) – Futhan for Inj. only 2. Disseminated intravascular coagulation (DIC) 3. To prevent coagulation of blood during extracorporeal blood circulation (ex. hemodialysis, plasmapheresis) in patients with bleeding complications or bleeding tendency. **[DOSAGE AND ADMINISTRATION]** ... 3. To prevent coagulation of blood during extracorporeal blood circulation (ex. hemodialysis, plasmapheresis) in patients with bleeding complications or bleeding tendency. For priming, wash and fill the blood route with 20mg of naloxone mesilate dissolved in 500mL of saline after dissolving in the small amount of 5% glucose solution or water for injection. After beginning of extracorporeal circulation, inject continuously at a rate of 20~50mg/hr as naloxone mesilate dissolved in 5% glucose solution into anticoagulant injection line. The dosage should be appropriately adjusted according to the patient's symptoms. The average dosage from clinical study is 35mg/hr as naloxone mesilate. ... Manufactured by Yuhan corporation. Distributed by SK chemicals **Revised:** Nov 8, 2012.
※ For the details, you are recommended to check on prescribing information. The latest approved label is available on the website following. <http://drug.mfds.go.kr>

References 1. MFDS approval details of Futhan for Inj. MFDS Online Medicine Library [Cited 2015 Dec 21]. Available from: <http://drug.mfds.go.kr> 2. H. Hirasawa, Theoretical consideration and practice of CHDF, Japan 総合医学史1998, p.25-30. 3. Ohtake Y et al, Contrib Nephrol, 1991;93:215-7. 4. Shinoda T, Contrib Nephrol, 2010;166:119-25. 5. Akizawa T et al, Artificial Organs, 1991;14:209-12. 6. Kim HC et al, Korean J Nephrol, 2004 Nov;23(6):920-6. 7. Akizawa T et al, Nephron, 1993;64(3):376-81. 8. Park II et al, Korean J Nephrol, 2009;28(3):205-10. 9. Hwang SD et al, Int J Artif Organs, 2013 Mar;36(3):208-16.

Making adherence part of their daily lives



Effective phosphate management, simplified

물과 함께 복용할 필요 없이 소량의 부드러운 음식에 섞어서 복용합니다.
정제를 씹거나 삼키기 어려운 환자도 쉽게 복용할 수 있습니다.¹

Ref) 1. FOSRENOL Summary of Product Characteristics, December 2014

포스레놀 정 FOSRENOL Tab 포스레놀 산 FOSRENOL Oral Powder

[성분 및 함량] Lanthanum carbonate 954mg(포스레놀정500mg), 1431mg(포스레놀정 750mg), 1908mg(포스레놀산1000mg) [효능효과] 혈액투석이나 복막투석을 받는 만성신부전 환자의 고인산혈증 치료 [용법용량] 정제의 경우 이 약을 그대로 삼키지 않고 반드시 씹어서 복용해야 한다. 씹는 것을 용이하게 하기 위해 이 약을 부수어 복용할 수 있다. 이 약을 처음 복용하는 환자는 혈청 인산 농도에 따라, 다음과 같은 초기 투여량을 매 식사와 함께 혹은 식후 즉시 분복한다. 산제의 경우, 이 약을 소량의 부드러운 음식에 섞어서 즉시 복용해야 한다. (15분 이내) 이 약 투여 전에 약포를 미리 개봉해서는 안 된다. 또한 다음번 투여를 위해 이 약을 음식과 미리 섞어서 보관해서는 안 된다. 이 약은 녹지 않으므로 복용을 위해 액체에 녹이지 않는다. 포스레놀 초기 투여량, 혈청 인산 5.6~7.4mg/dL의 경우 일일 750mg, 7.4~9.0mg/dL의 경우 일일 1500mg, 9.0mg/dL이상의 경우 일일 2250mg의 용량을 투여한다. 규칙적으로 혈청 인산 농도를 모니터링하면서 적정 혈청 인산농도에 도달할 때까지 2~3주 간격으로 투여량을 조정한다. 혈청 인산 농도는 란탄으로서 750mg/일 용량에서 조절되기 시작하였고, 대부분의 환자에서 1500~3000mg/일 용량에서 적정 혈청 인산농도로 조절되었다. 환자들은 인산이나 물의 섭취량을 조절하기 위해 권장된 식이요법을 준수해야 한다. 복용 시 물을 복용할 필요는 없다. [사용상 주의사항 및 금기] 제품설명서 참조 [이상반응] 가장 흔하게 보고된 이상반응은 위장관계 증상이었다. 위장관계 증상은 이 약을 식사와 함께 투여 시 발생빈도가 최소화되고, 일반적으로 투여가 지속될수록 약해진다.

※ 보다 자세한 내용은 홈페이지나 제품설명서를 참고하시기 바랍니다.

TORECA

TOTAL RENAL CARE

One-Chart
Care

통합적 파이프라인을 구축하여
원스탑 서비스를 제공할 것입니다.

Lifetime
Care

환자의 건강을 항상 먼저 생각하고,
평생을 케어하겠습니다.

Sustainable
Care

지속적인 제품 개발과 서비스
향상을 위해 노력하겠습니다.

Care
Companion

치료전문가가 최적의
솔루션 조합을 찾는 데 함께
하겠습니다.

보령제약 신장사업본부는 **TOTAL RENAL CARE**를 제공합니다.

[보령제약] | 서울특별시 종로구 창경궁로 136 보령빌딩 소비자상담실 Tel 080.708.8088 Fax 02.741.5291 www.boryung.co.kr

Contents

12	Overview
12	The Korean Society of Nephrology Organization
14	Welcome Message
15	Floor Plan
16	Program at a Glance
18	Detailed Program
36	Oral Communications List
45	Poster Presentation List
71	Exhibition
72	Sponsors
73	Memo



Overview

Title	The 38th Annual Meeting of the Korean Society of Nephrology (KSN 2018)
Date	May 17 (Thu) – 20 (Sun), 2018
Place	Grand Hilton Seoul, Seoul, Korea
Hosted by	The Korean Society of Nephrology, The Research Institute of Kidney Disease
Official Language	English, Korean
Program	Opening Ceremony, Plenary Lecture, Symposium, Oral & Poster Session, Exhibition, Welcome Reception, Gala Dinner
Contact	<p>The Korean Society of Nephrology #1401, 42 Seocho-daero 78 gil, seocho, seoul, Korea, 06626 Tel. +82-2-3486-8736 Fax. +82-2-3486-8737 Email. ksn@ksn.or.kr</p> <p>KSN 2018 Secertariat InSession International Convention Services, Inc. 4Fl. 10, Yeoksam-ro 7-gil, Gangnam-Gu, Seoul, 06244, Korea Tel. +82-2-3452-7199 Fax. +82-2-521-8683 Email. office@ksnmeeting.kr</p>

The Korean Society of Nephrology Organization

Organizing Committee

President	Yong-Soo Kim, M.D.	Chair, the Publication	Soo Wan Kim, M.D.
Congress President	Seong Eun Kim, M.D.	Chair, the ESRD Registry	Dong Chan Jin, M.D.
Congress Vice-President	Ja Wook Koo, M.D.	Chair, the Insurance and Legal Affairs	Byoung Geun Han, M.D. Seong Nam Kim, M.D.
President Elect	Yon Su Kim, M.D.	Treasurer	Duk-Hee Kang, M.D.
Auditor	Yeong Hoon Kim, M.D.	Chair, the Ethical Issues	JongSoo Lee, M.D.
KRCP Editor-in-Chief	Gheun-Ho Kim, M.D.	Chair, the Public Relation	Sang Kyung Cho, M.D.
Secretary General	Seok Joon Shin, M.D.	Chair, the Dialysis Quality Assurance	Kwon Wook Joo, M.D. Jung Geon Lee, M.D.
Vice-Secretary General	Dong Ki Kim, M.D. Hye Eun Yoon, M.D.	Chair, the Planning	Cheol Whee Park, M.D.
Chair, the Scientific Programs	Dae Ryong Cha, M.D.	Chair at Large	Seung Jung Kim, M.D. Chan-Duck Kim, M.D. Eun Young Lee, M.D. Seungyeup Han, M.D. Soo Bong Lee, M.D.
Chair, the External Affairs and Cooperation	Hyeong Cheon Park, M.D.		
Chair, the Training and Education	Ki Young Na, M.D.		

Advisory Board

Acute Kidney Injury

- Chair** Sang Kyung Jo, M.D.
- Member** Dong-Jin Oh, M.D.
Hyo-Wook Gil, M.D.
Myung-Gyu Kim, M.D.
Hyeong Cheon Park, M.D.
Hye Ryoung Jang, M.D.
Hoon Young Choi, M.D.

Diabetes and Obesity

- Chair** Cheol Whee Park, M.D.
- Member** Young Sun Kang, M.D.
HyunJin Noh, M.D.
Ju-Young Moon, M.D.
Jung Tak Park, M.D.
Hye Eun Yoon, M.D.
Eun Young Lee, M.D.
Jung Pyo Lee, M.D.
HunJoo Ha, M.D.

Dialysis (PD)

- Chair** Yong-Lim Kim, M.D.
- Member** Sun-Hee Park, M.D.
Dong-Ryeol Ryu, M.D.
JongHa Park, M.D.
De Eun Choi, M.D.

Glomerular and Tubulointerstitial Disorders (CKD)

- Chair** Ho Jun Chln, M.D.
- Member** Dong-Ryeol Ryu, M.D.
Sun-Hee Park, M.D.
Joon Ho Song, M.D.
Se Won Oh, M.D.
Sung Woo Lee, M.D.
Hajeong Lee, M.D.
Bum Soon Choi, M.D.
Seung Hyeok Han, M.D.

Inherited Kidney Disease (Pediatric Nephrology)

- Chair** Kee Hwan Yoo, M.D.
- Member** Hee Gyung Kang, M.D.
Min Hyun Cho, M.D.
Hee Yeon Cho, M.D.
Il Soo Ha, M.D.

Dialysis (HD)

- Chair** Yong-Soo Kim, M.D.
- Member** Sung Gyun Kim, M.D.
Sejoong Kim, M.D.
Young Ok Kim, M.D.
Sug Kyun Shin, M.D.
Young-Il Jo, M.D.

Fluid, Electrolyte and Acid-Base

- Chair** Gheun-Ho Kim, M.D.
- Member** Eun Hui Bae, M.D.
Won Kim, M.D.
Kyung Hwan Jeong, M.D.
Sang-Youb Han, M.D.

Hypertension and Vascular Biology

- Chair** Soo Wan Kim, M.D.
- Member** Eun Hui Bae, M.D.
Kyung Pyo Kang, M.D.
Gang Jee Ko, M.D.
JongHa Park, M.D.
Wonsuk An, M.D.
Jung Pyo Lee, M.D.
HarIn Rhee, M.D.
Seungyeup Han, M.D.

Transplantation

- Chair** Chul Woo Yang, M.D.
- Member** Beom Seok Kim, M.D.
Hyosang Kim, M.D.

Scientific Committee

- Chair** Dae Ryong Cha, M.D.
- Committee Members** Wonsuk An, M.D.
Sang-Youb Han, M.D.
Young Sun Kang, M.D.
Hyosang Kim, M.D.
Ji Eun Lee, M.D.
Dong Jin Oh, M.D.

- Eun Hui Bae, M.D.
Kyung Hwan Jeong, M.D.
Jeong-Hae Kie, M.D.
Sung Gyun Kim, M.D.
So Young Lee, M.D.
Sun-Hee Park, M.D.
- De Eun Choi, M.D.
Hee Gyung Kang, M.D.
Beom Seok Kim, M.D.
Won Kim, M.D.
HyunJin Noh, M.D.
Joon Ho Song, M.D.

Welcome Message

Dear colleagues,

It is our great honor and pleasure to invite you to the 38th Annual Meeting of the Korean Society of Nephrology (KSN 2018) which will be held in Grand Hilton Seoul, Seoul, Korea on May 17-20, 2018.

One of the major missions of KSN is to provide various educational opportunities and promote international exchanges for the society members. Since the foundation in 1980, KSN has organized national scientific meetings and first expanded it as an international meeting in 2016. In 2017, more than 1,400 kidney professionals attended at the KSN 2017, and 41 overseas experts were invited to give engaging lecture and provocative discussion.

The watch word of KSN 2018 is "A new milestone for nephrology". KSN 2018 is preparing international symposia with the most recent updates in each field of nephrology, and special sessions for future medicine. We firmly believe that the KSN 2018 will be a more flourished international meeting both in quality and quantity. We are planning inspiring events featuring some of the world's most renowned professionals in the field, key opinion leaders in the global nephrology community, distinguished keynote speakers, and panelists to share their experiences and exchange knowledge. We expanded the travel grant to more countries and with a greater extent than previously. We also aim to create a warm event where we can socialize with as many people as possible, and build a strong networking with each other.

We encourage you to actively participate in and enjoy this fascinating opportunity by sharing your valuable expertise and experiences with top-notch researchers from all over the world.

We look forward to seeing you at the KSN 2018 in Seoul.

Sincerely yours,



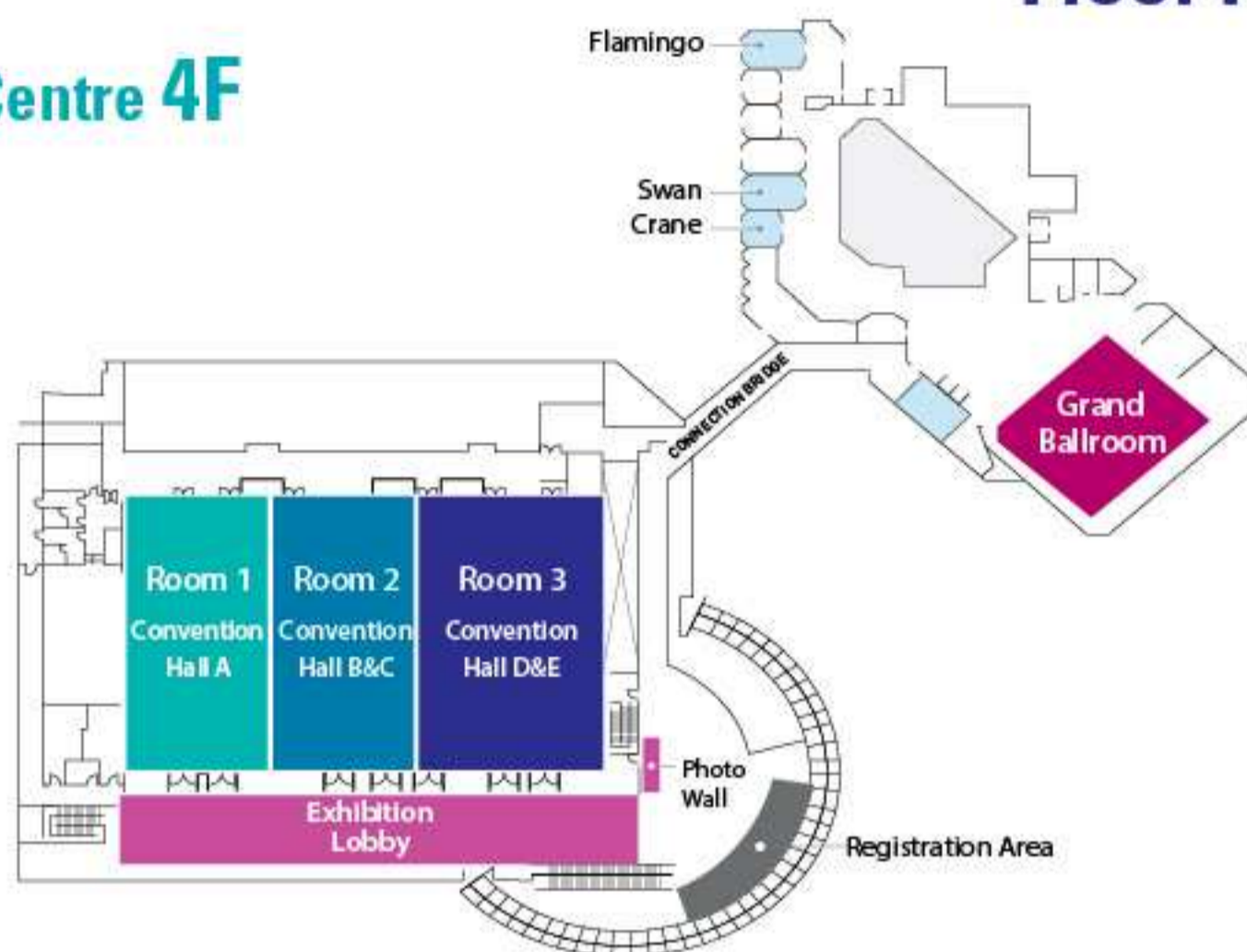
Yong-Soo Kim, M.D.
President
Korean Society of Nephrology



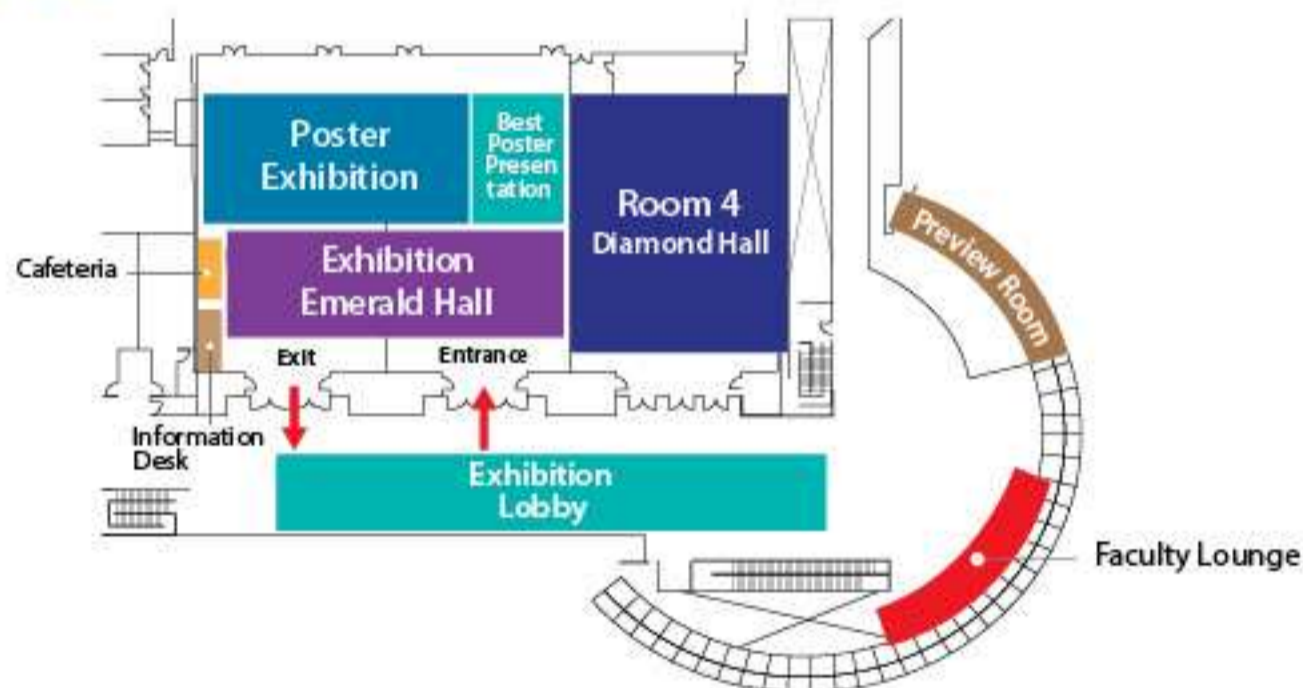
Seong Eun Kim, M.D.
Congress President
Korean Society of Nephrology

Floor Plan

Convention Centre 4F & Hotel 2F



Convention Centre 3F



Operating Hours

Category	Location	May 17 (Thu)	May 18 (Fri)	May 19 (Sat)	May 20 (Sun)
Registration Desk	Lobby, 4F, Convention Centre	12:00-16:30	07:30-16:00	07:00-16:00	07:30-11:00
Preview Room	Lobby, 3F, Convention Centre	11:00-18:30	07:00-18:00	07:00-18:00	07:00-13:00
Faculty Lounge	Lobby, 3F, Convention Centre	12:00-18:30	08:00-18:00	08:00-18:00	08:00-13:00
Exhibition	Emerald Hall, 3F, Convention Centre	12:00-18:30	08:00-18:00	08:00-18:00	
	Lobby, 3F and 4F Convention Centre	12:00-18:30	08:00-18:00	08:00-18:00	08:00-13:00

* Poster Exhibition will be open on May 18(Fri) and 19(Sat).

Program at a Glance

Korean Session

English Session

May 17 (Thu)					
Venue	Room 1	Room 2	Room 3	Room 4	Grand Ballroom
Time	Convention Hall A (4F)	Convention Hall B&C (4F)	Convention Hall D&E (4F)	Diamond Hall (3F)	Hotel (2F)
12:00-13:00	Registration				
13:00-15:00	Nephrology Board Review Course (Aging and the Kidney)	Acute Kidney Injury	Hypertension and Vascular Biology	Kidney Academy	
15:00-17:00		Oral Communications (Dialysis 1)	Update of IgA Nephropathy	Overseas Trainee Presentation	
17:00-17:20	Coffee Break				
17:20-17:30	Opening Ceremony (Seong Eun Kim)				
17:30-18:20	Plenary Lecture 1 (Hyug Moo Kwon)				Welcome Reception
19:00-21:00					
May 18 (Fri)					
Venue	Room 1	Room 2	Room 3	Room 4	Grand Ballroom
Time	Convention Hall A (4F)	Convention Hall B&C (4F)	Convention Hall D&E (4F)	Diamond Hall (3F)	Hotel (2F)
07:30-08:00	Registration				
08:00-10:00	Pathogenesis of Kidney Disease in Diabetes and Obesity	Oral Communications (Acute Kidney Injury)	Hyponatremia, Dyskalemia, and Renal Tubular Acidosis	Clinical Significance of Biomarkers in Childhood Kidney Disease	
10:00-10:30	Poster Visit & Break		Report of Survey Results from Nephrology Fellows in Korea		
10:30-11:30					
11:30-12:30	Luncheon Symposium				
	SK Chemicals, TORAY	JW Pharmaceutical	Boryung	Handok Inc.	
12:30-13:00	Break				
13:00-13:50	Plenary Lecture 2 (Lilach O. Lerman)				
13:50-14:00	Break				
14:00-16:00	APSN-KSN Joint CME Course 1	Oral Communications (Diabetes and Obesity)	Special Session (Future Medicine/ Hot Issue)	Acute Kidney Injury	
16:00-18:00	APSN-KSN Joint CME Course 2	Oral Communications (Renal physiology, Hypertension and Electrolyte disorders)	Update of Donor Specific Antibody in KT	Basic Research	
18:30-20:30					Gala Dinner

Korean Session

English Session

May 19 (Sat)

May 19 (Sat)					
Venue	Room 1	Room 2	Room 3	Room 4	Grand Ballroom
Time	Convention Hall A (4F)	Convention Hall B&C (4F)	Convention Hall D&E (4F)	Diamond Hall (3F)	Hotel (2F)
07:00-08:00	Registration				KSN Board of Regent [KSN]
08:00-09:00	Therapy of Kidney Disease in Diabetes and Obesity	Oral Communications (Dialysis 2)	Practical Issues of Peritoneal Dialysis	CPC	
09:00-10:00					Meet the Expert (Swan / Crane)
10:00-12:00	Transplant Infection	Oral Communications (Chronic Kidney Disease 1)	Update of Glomerulonephritis	Renal Pathology	
12:00-13:00	Luncheon Symposium				
	FMC Korea	Korea Otsuka Pharmaceutical Co., Ltd.	Kyowa Hakko Kirin Korea Co., Ltd.	Baxter	
13:00-13:30	Poster Visit & Break			General Assembly (Award)	
13:30-14:00					
14:00-14:50	Plenary Lecture 3 (Charles E. Alpers)				
14:50-15:00	Break				
15:00-15:10	KDIGO-KSN Joint Symposium		KSNESRD Registry Report	Challenges and Advances in Hemodialysis	Peer Review and Publication Ethics
15:10-15:30			Dialysis Committee		
15:30-16:00			Interim Report of KSN Cooperative Study		
16:00-16:30			Ethics Education (Ethics for Life Sustaining Therapy of Patient in End of Life)		
16:30-17:00		Oral Communications (Transplantation 1)			
17:00-18:00					

May 20 (Sun)

Venue	Room 1	Room 2	Room 3	Room 4	Grand Ballroom
Time	Convention Hall A (4F)	Convention Hall B&C (4F)	Convention Hall D&E (4F)	Diamond Hall (3F)	Hotel (2F)
07:30-08:30	Registration				
08:30-10:30	Dialysis Specialist Physician Course 1 (Aging in Renal Disease)	Oral Communications (Chronic Kidney Disease 2)	Dialysis Nurse Course 1	Common Issues Confronting During Online Hemodiafiltration	Hands-On Session
10:30-11:00	Coffee Break				
11:00-12:30	Dialysis Specialist Physician Course 2 (Blood Pressure in CKD/ESRD Patients)	Oral Communications (Transplantation 2)	Dialysis Nurse Course 2	Serum Electrolytes as Predictors for Clinical Outcomes	Hands-On Session
12:30-13:00					

Detailed Program

May 17 (Thu)

13:00-15:20	Nephrology Board Review Course 1 (Aging and the Kidney)	[BRC]	KOR	Room 1
-------------	--	-------	-----	--------

Chair(s) Beom Seok Kim *Yonsei University, Korea*

BRC-01 Functional alterations of the kidney and urinary tract in the elderly **Kook-Hwan Oh**
Seoul National University, Korea

BRC-02 Functional evaluation of the kidney and urinary tract in the elderly **Seung Hyeok Han**
Yonsei University, Korea

BRC-03 Pathophysiology and clinical meaning of CKD in the elderly **Bum Soon Choi**
The Catholic University of Korea, Korea

BRC-04 Medication issues in the elderly—drug selection, dosing, drug interaction **Sang Ho Lee**
Kyung Hee University, Korea

15:20-17:00	Nephrology Board Review Course 2 (Aging and the Kidney)	[BRC]	KOR	Room 1
-------------	--	-------	-----	--------

Chair(s) Sang-Youb Han *Inje University, Korea*

BRC-05 Assessment, diagnosis and treatment of AKI in the elderly **Hye Ryoung Jang**
Sungkunkwan University, Korea

BRC-06 Renal replacement therapy in the elderly **Dong-Ryeol Ryu**
Ewha Womans University, Korea

BRC-07 Fluid therapy in the elderly **Sejoong Kim**
Seoul National University, Korea

13:00-15:00	Acute Kidney Injury	[AKI 01]	KOR	Room 2
-------------	----------------------------	----------	-----	--------

Chair(s) Won Yong Cho *Korea University, Korea*
Dong Won Lee *Pusan National University, Korea*

AKI 01-01 Normotensive ischemic AKI **Hye Ryoung Jang**
Sungkunkwan University, Korea

AKI 01-02 Acute kidney injury in the transplant patient **Sik Lee**
Chonbuk National University, Korea

AKI 01-03 The distant organ effects of acute kidney injury **Hyo-Wook Gil**
Soonchunhyang University, Korea

AKI 01-04 AKI outcomes: CKD and others **Dong-Jin Oh**
Seonam University, Korea

13:00-15:00	Hypertension and Vascular Biology	[HTN]	KOR	Room 3
Chair(s)	JongUn Lee <i>Chonnam National University, Korea</i> Sung Kwang Park <i>Chonbuk National University, Korea</i>			

HTN-01	Salt, diseased kidney, and hypertension	Gheun-Ho Kim <i>Hanyang University, Korea</i>
HTN-02	RAAS in hypertension and kidney disease	Eun Hui Bae <i>Chonnam National University, Korea</i>
HTN-03	Evidence for treatment of uncomplicated, stage 1 hypertension: what is the evidence?	Chan Joo Lee <i>Yonsei University, Korea</i>
HTN-04	Target of diastolic blood pressure and pulse pressure in CKD patients	Dong-Ryeol Ryu <i>Ewha Womans University, Korea</i>

13:00-15:00	Kidney Academy	[KA]	KOR	Room 4
Chair(s)	Seok Joon Shin <i>The Catholic University of Korea, Korea</i>			

KA-01	Update on management of CKD-MBD	Shin Young Ahn <i>Korea University, Korea</i>
KA-02	Clinical implication and management of hyperkalemia	Eunsil Koh <i>The Catholic University of Korea, Korea</i>
KA-03	Anemia management in CKD: based on the latest knowledge of iron and ESA treatment	Hyo Jin Kim <i>Dongguk University, Korea</i>
KA-04	Plain, aging in healthy	Ho Seok Koo <i>Inje University, Korea</i>

15:00-17:00	Oral Communications (Dialysis 1)	[OR 01]	KOR	Room 2
Chair(s)	Young Ok Kim <i>The Catholic University of Korea, Korea</i> Jun Young Do <i>Yeungnam University, Korea</i>			

OR 01 DL-01 ~ OR 01 DL-12

Detailed Program

15:00-17:00	Update of IgA Nephropathy	[GN 01]	KOR	Room 3
Chair(s)	Bum Soon Choi Sun-Hee Park	<i>The Catholic University of Korea, Korea Kyungpook National University, Korea</i>		
GN 01-01	IgA Nephropathy-diagnosis, prognosis, and outcomes in Korea	Seung Hyeok Han <i>Yonsei University, Korea</i>		
GN 01-02	New insights into the pathogenesis of IgA nephropathy	Seung Seok Han <i>Seoul National University, Korea</i>		
GN 01-03	Current status of steroid-based immunosuppressive therapy for IgA nephropathy	Ho Jun Chin <i>Seoul National University, Korea</i>		
GN 01-04	Novel therapy of IgA nephropathy	Jung Eun Lee <i>Sungkunkwan University, Korea</i>		
15:00-17:00	Overseas Trainee Presentation	[OTP]	KOR	Room 4
Chair(s)	Dong Cheol Han Nam Ho Kim	<i>Soonchunhyang University, Korea Chonnam National University, Korea</i>		
OTP-01	The impact of uninephrectomy on acute kidney injury	Myung-Gyu Kim <i>Korea University, Korea</i>		
OTP-02	Gene-Edited human kidney organoids reveal mechanisms of disease in podocyte development	Yong Kyun Kim <i>The Catholic University of Korea, Korea</i>		
OTP-03	New insight of multiphoton microscopy (MPM)	Ju-Young Moon <i>Kyung Hee University, Korea</i>		
OTP-04	Efficacy and safety of eculizumab for the treatment of antibody-mediated rejection following renal transplantation	Ho Sik Shin <i>Kosin University, Korea</i>		
OTP-05	Regenerative medicine and kidney diseases: stem cell-conditioned medium based therapy in renal IRI	Hyung Eun Yim <i>Korea University, Korea</i>		
17:20-17:30	Opening Ceremony		ENG	Room 1&2
	Seong Eun Kim	<i>Congress President, Korean Society of Nephrology</i>		
17:30-18:20	Plenary Lecture 1	[PL 01]	ENG	Room 1&2
Chair(s)	Chun Gyoo Ihm Seong Eun Kim	<i>Kyung Hee University, Korea Dong-A University, Korea</i>		
PL 01-01	TonEBP mediates hyperglycemia-induced inflammation, and vascular and renal injury	Hyug Moo Kwon <i>Ulsan National Institute of Science and Technology, Korea</i>		

May 18 (Fri)

08:00-10:00 Pathogenesis of Kidney Disease in Diabetes and Obesity [DO 01] ENG Room 1

Chair(s) Jong Soon Lee *Harvard Medical School, USA*
Hunjoo Ha *Ewha Womans University, Korea*

- DO 01-01** The role of obesity-induced inflammation in the development of insulin resistance and type 2 diabetes *Jong Soon Lee, Harvard Medical School, USA*
- DO 01-02** Lipid dysregulation and insulin resistance *Jae Bum Kim, Seoul National University, Korea*
- DO 01-03** The role of slit-diaphragm associated protein MAGI-2 in progression of CKD *Katsuhiko Asanuma, Kyoto University, Japan*
- DO 01-04** Adiposity and kidney disease *Jung Tak Park, Yonsei University, Korea*

08:00-10:00 Oral Communications (Acute Kidney Injury) [OR 02] ENG Room 2

Chair(s) Hye Ryoung Jang *Sungkunkwan University, Korea*
Myung-Gyu Kim *Korea University, Korea*

OR 02 AK-01 ~ OR 02 AK-12

08:00-10:00 Hyponatremia, Dyskalemia, and Renal Tubular Acidosis [FL 01] ENG Room 3

Chair(s) Shih-Hua Lin *Tri-Service General Hospital, Taiwan*
Won Kim *Chonbuk National University, Korea*

- FL 01-01** Management of hyponatremia: from water restriction to tolvaptan *Mustafa Arici, Hacettepe University, Turkey*
- FL 01-02** Differential diagnosis of hypokalemic disorders *Shih-Hua Lin, Tri-Service General Hospital, Taiwan*
- FL 01-03** Pathophysiology of hyperkalemia in CKD *Susumu Ookawara, Jichi Medical University, Japan*
- FL 01-04** How to approach the patient with endemic renal tubular acidosis in Thailand *Somkiat Vasuvattakul, Siriraj Hospital, Thailand*

Detailed Program

08:00-10:00	Clinical Significance of Biomarkers in Childhood Kidney Disease		[IK]	ENG	Room 4
Chair(s)	Kee Hwan Yoo Hee Gyung Kang	Korea University, Korea Seoul National University, Korea			
IK-01	Renal development: from bench to bedside	Carlton M. Bates University of Pittsburgh, USA			
IK-02	Biomarkers of childhood nephrotic & nephritic syndrome	William Smoyer Ohio State University, USA			
IK-03	Biomarkers of congenital ureteral obstruction	Kwanjin Park Seoul National University, Korea			
IK-04	Emerging biomarkers of UTI/VUR in children	Hyung Eun Yim Korea University, Korea			
10:00-10:30	Report of Survey Results from Nephrology Fellows in Korea			KOR	Room 3
	Report of survey results from nephrology fellows in Korea	Training and Education Committee			
11:30-12:30	Luncheon Symposium				
	Sponsored by SK Chemicals, TORAY 			ENG	Room 1
Chair(s)	Chun Soo Lim	Seoul National University, Korea			
LS 01-01	Recent progress of uremic pruritus management in Japan	Toshiya Ebata Chitofuna Dermatology Clinic, Japan			
	Sponsored by JW Pharmaceutical 			KOR	Room 2
Chair(s)	Young Joo Kwon	Korea University, Korea			
LS 02-01	Optimal treatment of CKD-MBD targeted at phosphate control	Bum Soon Choi The Catholic University of Korea, Korea			
	Sponsored by BORYUNG 			KOR	Room 3
Chair(s)	Cheol Whee Park	The Catholic University of Korea, Korea			
LS 03-01	Update evidence of Kanarb: evaluation the antihypertensive efficacy of fimasartan versus valsartan monotherapy	Hajeong Lee Seoul National University, Korea			

LS 03-02 The outline of the FimAsartaN proTeinuriA
SusTained reduCtion study (FANTASTIC) in diabetic
chronic kidney disease **Dong-Ryeol Ryu**
Ewha Womans University, Korea

Sponsored by Handok Inc. 
Chair(s) Hyeong Cheon Park Yonsei University, Korea **ENG** Room 4

LS 04-01 Problems and challenges in the diagnosis and
management of aHUS **Hermann Haller**
Hannover Medical School, Germany

13:00-13:50 Plenary Lecture 2 [PL 02] ENG Room 1&2

Chair(s) Yong-Soo Kim The Catholic University of Korea, Korea
Kang Wook Lee Chungnam National University, Korea

PL 02-01 Cell-based therapy in renal vascular disease:
are we there yet? **Lilach O. Lerman**
Mayo Clinic, USA

14:00-16:00 APSN-KSN Joint CME Course 1 [CME] ENG Room 1

Chair(s) Hyeong Cheon Park Yonsei University, Korea
Dusit Lumlertgul Chiang Mai University, Thailand

CME-01 Evaluation and care of living kidney donors **Hye Eun Yoon**
The Catholic University of Korea, Korea

CME-02 Update on management of diabetic nephropathy **Masaomi Nangaku**
University of Tokyo, Japan

CME-03 Selection of dialysis modality: evidence from
cohort studies **Jang-Hee Cho**
Kyungpook National University, Korea

CME-04 The new paradigms in prevention and
management of PD-related peritonitis **Philip Li**
The Chinese University of Hong Kong, Hong Kong

14:00-16:00 Oral Communications (Diabetes and Obesity) [OR 03] ENG Room 2

Chair(s) Dae Ryong Cha Korea University, Korea
Seung Hyeok Han Yonsei University, Korea

OR 03 DO-01 ~ OR 03 DO-12

Detailed Program

14:00-16:00	Special Session (Hot issue & Future Medicine) [SPS]		KOR	Room 3
Chair(s)	Young Sun Kang Joon Ho Song	Korea University, Korea Inha University, Korea		
SPS-01	The forth industrial revolution and future of medicine	Chiweon Kim Seoul Wise Hospital, Korea		
SPS-02	Personal big data for precision medicine: genomes and health records	Ju Han Kim Seoul National University, Korea		
SPS-03	Application of NGS-based systems biology methods to understand kidney diseases pathogenesis	Murim Choi Seoul National University, Korea		
14:00-16:00	Acute Kidney Injury [AKI 02]		ENG	Room 4
Chair(s)	Hans-Joachim Anders Jaeseok Yang	Ludwig-Maximilians University Munich, Germany Seoul National University, Korea		
AKI 02-01	Nuclear receptors in kidney injury: Role of Vitamin D, FXR and PGC-1 α	Soo Wan Kim Chonnam National University, Korea		
AKI 02-02	Pathophysiology of acute kidney injury - an update	Hans-Joachim Anders Ludwig-Maximilians University Munich, Germany		
AKI 02-03	Macrophages in AKI to CKD transition	Sang Kyung Jo Korea University, Korea		
AKI 02-04	Stem cells in acute kidney injury	Hoon Young Choi Yonsei University, Korea		
16:00-18:00	APSN-KSN Joint CME Course 2 [CME]		ENG	Room 1
Chair(s)	Masaomi Nangaku Yong-Soo Kim	University of Tokyo, Japan The Catholic University of Korea, Korea		
CME-05	Biomarkers of AKI	Myung-Gyu Kim Korea University, Korea		
CME-06	IgA nephropathy: 50 years on	Sydney Tang University of Hong Kong, Hong Kong		
CME-07	Transplantation immunology	Sang Ho Lee Kyung Hee University, Korea		
CME-08	Drug induced kidney injury	Robert Walker University of Otago, New Zealand		

16:00-18:00 Oral Communications (Renal physiology, Hypertension and Electrolyte disorders) [OR 04] ENG Room 2

Chair(s) **Soo Wan Kim** *Chonnam National University, Korea*
Gheun-Ho Kim *Hanyang University, Korea*

OR 04 RH-01 ~ OR 04 RH-12

16:00-18:00 Update of Donor Specific Antibody in KT [TPL 01] KOR Room 3

Chair(s) **Joong Kyung Kim** *Bong Seng Memorial Hospital, Korea*
Beom Seok Kim *Yonsei University, Korea*

TPL 01-01 DSA detection method & interpretation **Hyosang Kim**
University of Ulsan, Korea

TPL 01-02 Clinical significance of HLA Ab focused on DQ **Hye Eun Yoon**
The Catholic University of Korea, Korea

TPL 01-03 From antibody to antigen: epitope analysis **Eun-Suk Kang**
Sungkunkwan University, Korea

TPL 01-04 How to monitor DSA and what we should do if DSA is present **Seungyeup Han**
Keimyung University, Korea

16:00-18:00 Basic Research [BR] ENG Room 4

Chair(s) **Hyug Moo Kwon** *Ulsan National Institute of Science and Technology, Korea*
Hunjoo Ha *Ewha Womans University, Korea*

BR-01 Metabolomics for biomarker discovery in renal transplant rejection **Seungil Cho**
Kyungpook National University, Korea

BR-02 Network-based integrated analysis of transcriptomic and proteomic data reveals novel targets in treatment of peritoneal fibrosis in humans **Joo Young Huh**
Chonnam National University, Korea

BR-03 Data-driven approaches for efficient drug discovery **Wan Kyu Kim**
Ewha Womans University, Korea

BR-04 A.I. in clinical decision and drug discovery **Youngwoo Pae**
iMediSyn Inc., Korea

Detailed Program

May 19 (Sat)

07:00-08:00	KSN Board of Regent	[KSN]	Grand Ballroom
-------------	----------------------------	-------	----------------

08:00-10:00	Therapy of Kidney Disease in Diabetes and Obesity	[DO 02]	ENG Room 1
Chair(s)	Mitsuo Kato Eun Young Lee	City of Hope, Beckman research institute, USA Soonchunhyang University, Korea	

DO 02-01 MicroRNAs and long noncoding RNAs as therapeutic targets for diabetic nephropathy Mitsuo Kato
City of Hope, Beckman research institute, USA

DO 02-02 Organ crosstalk in diabetic nephropathy Jin Joo Cha
Korea University, Korea

DO 02-03 Modulating inflammation in diabetic nephropathy Ju-Young Moon
Kyung Hee University, Korea

DO 02-04 AdipoRon therapy in diabetic nephropathy Yaeni Kim
The Catholic University of Korea, Korea

08:00-10:00	Oral Communications (Dialysis 2)	[OR 05]	ENG Room 2
Chair(s)	Kook-Hwan Oh Sung Gyun Kim	Seoul National University, Korea Hallym University, Korea	

OR 05 DL-01 ~ OR 05 DL-12

08:00-10:00	Practical Issues of Peritoneal Dialysis	[PD]	KOR Room 3
Chair(s)	Yong-Lim Kim Ki Young Na	Kyungpook National University, Korea Seoul National University, Korea	

PD-01 Management of fluid-overloaded patients Su-Hyun Kim
Chung-Ang University, Korea

PD-02 How to manage metabolic complications of PD? Tae Ik Chang
National Health Insurance Service
Ilseon Hospital, Korea

PD-03 Sarcopenic obesity in dialysis patients: PD vs. HD Wonsuk An
Dong-A University, Korea

PD-04 Management of relapsing or recurrent PD peritonitis Jwa-Kyung Kim
Hallym University, Korea

08:00-10:00	CPC	[CPC]	KOR	Room 4
Case 1				
Chair(s)	Mee Young Sol Won Kim	Pusan National University, Korea Chonbuk National University, Korea		
CPC-01	Internal Medicine	Ji-Young Choi Kyungpook National University, Korea		
	Clinical Discussion	Kum Hyun Han Inje University, Korea		
	Pathology	Man-Hoon Han Kyungpook National University, Korea		
Case 2				
Chair(s)	Yeong-Jin Choi Yu Ah Hong	The Catholic University of Korea, Korea The Catholic University of Korea, Korea		
CPC-02	Internal Medicine	Ji Young Lee Kyung Hee University, Korea		
	Clinical Discussion	Shin Young Ahn Korea University, Korea		
	Pathology	Ji-Youn Sung Kyung Hee University, Korea		
Case 3				
Chair(s)	Kyung Chul Moon Sang-Youb Han	Seoul National University, Korea Inje University, Korea		
CPC-03	Internal Medicine	Hyang Kim Sungkunkwan University, Korea		
	Clinical Discussion	Ji Yong Jung Gachon University, Korea		
	Pathology	Su-Jin Shin Hanyang University, Korea		
09:00-10:00	Meet the Expert	[ME]	ENG	Swan
ME-01	The new therapeutic role of continuous renal replacement therapies (CRRT) in multiple organ dysfunction syndrome	Claudio Ronco San Bortolo Hospital, Italy		

Detailed Program

09:00-10:00	Meet the Expert	[ME]	ENG	Crane
-------------	-----------------	------	-----	-------

ME-02	New insights into AKI to CKD continuum and the role of maladaptive repair	Masaomi Nangaku University of Tokyo, Japan
-------	---	---

10:00-12:00	Transplant Infection	[TPL 02]	ENG	Room 1
-------------	----------------------	----------	-----	--------

Chair(s)	Chul Woo Yang Yingyos Avihingsanon	The Catholic University of Korea, Korea Center of Excellence in Immunology and Immune-mediated Diseases, Thailand
----------	---------------------------------------	--

TPL 02-01	Experience of common viral infection in kidney transplant	Yingyos Avihingsanon Center of Excellence in Immunology and Immune-mediated Diseases, Thailand
-----------	---	---

TPL 02-02	Detection and management of BK virus in kidney transplantation	Ya-Chung Tian Chang Gung Memorial Hospital, Taiwan
-----------	--	---

TPL 02-03	Prediction of tuberculosis development after kidney transplantation	Jaeseok Yang Seoul National University, Korea
-----------	---	--

TPL 02-04	Risk factors and management of PCP pneumonia	Byung Chul Shin Chosun University, Korea
-----------	--	---

10:00-12:00	Oral Communications (Chronic Kidney Disease 1)	[OR 06]	ENG	Room 2
-------------	--	---------	-----	--------

Chair(s)	Seung Hyeok Han Ki Ryang Na	Yonsei University, Korea Chungnam National University, Korea
----------	--------------------------------	---

OR 06 CK-01 ~ OR 06 CK-12

10:00-12:00	Update of Glomerulonephritis	[GN 02]	ENG	Room 3
-------------	------------------------------	---------	-----	--------

Chair(s)	Kunitoshi Iseki Eun Hui Bae	Tomishiro Central Hospital, Japan Chonnam National University, Korea
----------	--------------------------------	---

GN 02-01	Asian perspectives on updated KDIGO GN guideline	Kunitoshi Iseki Tomishiro Central Hospital, Japan
----------	--	--

GN 02-02	Clinical implication of auto-antibodies in membranous nephropathy	Sang Ho Lee Kyung Hee University, Korea
----------	---	--

GN 02-03	Vasculitis and glomerulonephritis	Stephen P. McAdoo Imperial College London, UK
----------	-----------------------------------	--

GN 02-04	Clinical characteristics of ANCA-negative crescentic GN	Sung Woo Lee Eulji University, Korea
----------	---	---

10:00-12:00	Renal Pathology	[RP]	KOR	Room 4
Chair(s)	So Young Jin Yong-Jin Kim	Soonchunhyang University, Korea Kyungpook National University, Korea		
RP-01	Classification of IgA nephropathy: recent update	Ahrim Moon Soonchunhyang University, Korea		
RP-02	Clinical aspects of IgA nephropathy	Hyunwook Kim Yonsei University, Korea		
RP-03	Classification of lupus nephritis: recent update	Beom Jin Lim Yonsei University, Korea		
RP-04	Clinical aspects of lupus nephritis	Hyunwook Kim Yonsei University, Korea		

12:00-13:00	Luncheon Symposium			
Chair(s)	Sponsored by FMC Korea Kook-Hwan Oh	PRESENIUS MEDICAL CARE Seoul National University, Korea	ENG	Room 1
LS 05-01	Current recommendations for nutritional management of CKD and the role of ketoanalogues	Kamyar Kalantar-Zadeh University of California Irvine, USA		
Chair(s)	Sponsored by Korea Otsuka Pharmaceutical Co., Ltd. Kyu Beck Lee	Otsuka Sungkunkwan University, Korea	ENG	Room 2
LS 06-01	Tolvaptan, a novel therapeutic strategy: from evidence into real clinical practice	Ken Tsuchiya Tokyo Women's Medical University, Japan		
Chair(s)	Sponsored by Kyowa Hakko Kirin Korea Co., Ltd. Yong-Lim Kim	KYOWA KIRIN Kyungpook National University, Korea	ENG	Room 3
LS 07-01	Expanding roles of calcimimetics in the management of hyperparathyroidism	Masafumi Fukagawa Tokai University, Japan		
Chair(s)	Sponsored by Baxter Soo Wan Kim	Baxter Chonnam National University, Korea	KOR	Room 4
LS 08-01	Impact of theranova in dialysis patients for nutritional improvement and beyond	Jai Won Chang University of Ulsan, Korea		

Detailed Program

13:00-14:00	General Assembly		[GA]	Room 4
14:00-14:50	Plenary Lecture 3		[PL 03]	ENG Room 1&2
Chair(s)	Hyeon Joo Jeong Yong-Jin Kim	Yonsei University, Korea Kyungpook National University, Korea		
PL 03-01	Diabetic nephropathy: pathology, pathogenesis, and potential for reversal		Charles E. Alpers University of Washington, USA	
14:50-15:10	KSN ESRD Registry Report		[ESRD]	KOR Room 3
Chair(s)	Seong Eun Kim	Dong-A University, Korea		
ESRD-01	KSN ESRD registry report 2017		Dong-Chan Jin The Catholic University of Korea, Korea	
15:10-16:00	Dialysis Committee		[DC]	KOR Room 3
Chair(s)	Seong Eun Kim	Dong-A University, Korea		
DC-01	2018 Report for Hemodialysis Center Accreditation		Young-Ki Lee Hallym University, Korea	
DC-02	Standards for establishment of hemodialysis units in Korea		Seung-Ho Park HUB Medical Clinic, Korea	
15:00-17:00	Challenges and Advances in Hemodialysis		[HD]	ENG Room 4
Chair(s)	Kamyar Kalantar-Zadeh Yong-Soo Kim	University of California Irvine, USA The Catholic University of Korea, Korea		
HD-01	Expanded HD: mechanisms and clinical outcomes		Claudio Ronco San Bortolo Hospital, Italy	
HD-02	Role of super high flux membranes in HDF		Ikuto Masakane Yabuki Hospital, Japan	
HD-03	Benefit of Incremental HD		Kamyar Kalantar-Zadeh University of California Irvine, USA	
HD-04	Incremental initiation of hemodialysis: a cohort in Korea		Jung Pyo Lee Seoul National University, Korea	

15:00-16:30	Peer Review and Publication Ethics	[KRCP]	KOR	Grand Ballroom
Chair(s)	Sung-Tae Hong Gheun-Ho Kim	Seoul National University, Korea Hanyang University, Korea		

KRCP-01	Making peer review more effective	Sung-Tae Hong Seoul National University, Korea
KRCP-02	How to improve ethics in publication	Dong Soo Han Hanyang University, Korea

15:30-18:00	KDIGO-KSN Joint Symposium	[JS]	ENG	Room 1
Chair(s)	Juergen Floege Hyeong Cheon Park	University Hospital Aachen, Germany Yonsei University, Korea		

	Opening remarks	Michael Cheung KDIGO
JS-01	Treating chronic hepatitis C in patients with chronic kidney disease	Jung Il Lee Yonsei University, Korea
JS-02	KDIGO guideline update on hepatitis C in CKD: new evidence, new recommendations	Michel Jadoul Cliniques Universitaires Saint Luc, Belgium
JS-03	Arrhythmia and sudden cardiac death in ESRD patients	Junbeom Park Ewha Womans University, Korea
JS-04	Heart failure in CKD	Andrew House Western University, Canada
JS-05	Current status of glomerulonephritis in Korea	Ho Jun Chin Seoul National University, Korea
JS-06	KDIGO controversies conference on glomerular diseases 2017: a summary	Juergen Floege University Hospital Aachen, Germany

16:00-18:00	Oral Communications (Transplantation 1)	[OR 07]	ENG	Room 2
Chair(s)	Sang Ho Lee Dong Wan Chae	Kyung Hee University, Korea Seoul National University, Korea		

OR 07 TL-01 ~ OR 07 TL-12

Detailed Program

Detailed Program (May 19)

16:00-16:30	Interim Report of KSN Cooperative Study		KOR	Room 3
Chair(s)	Cheol Whee Park <i>The Catholic University of Korea, Korea</i>			
	Interim Report of KSN Cooperative Study	Dong-Ryeol Ryu <i>Ewha Womans University, Korea</i>		
		Tae-Hyun Yoo <i>Yonsei University, Korea</i>		
16:30-18:00	Ethics Education		[ETH]	KOR Room 3
Chair(s)	Seung Duk Hwang <i>Soonchunhyang University, Korea</i> Jong Soo Lee <i>University of Ulsan, Korea</i>			
ETH-01	The apprehesion and current status of medical decision making system for end-stage of life	Yoon-seoung Lee <i>Seoul National University, Korea</i>		
ETH-02	End of life: role of medical personnel	Yunsuck Koh <i>University of Ulsan, Korea</i>		
ETH-03	Decision of appropriate initiation and withdrawal from dialysis	Seong Eun Kim <i>Dong-A University, Korea</i>		

May 20 (Sun)

08:30-10:30	Aging in Renal Disease	[PHY 01]	KOR	Room 1
Chair(s)	Seung Hwan Sohn <i>Dr. Sohn's Hemodialysis Center, Korea</i>			
PHY 01-01	Early vascular aging (EVA syndrome) in CKD/ESRD	Jung Tak Park <i>Yonsei University, Korea</i>		
PHY 01-02	Is renal replacement therapy truly beneficial in super-aged patients?	Do Hyoung Kim <i>Hallym University, Korea</i>		
PHY 01-03	Vascular access for super-aged patients	Dan Song <i>Soonchunhyang University, Korea</i>		
08:30-10:30	Oral Communications (Chronic Kidney Disease 2)	[OR 08]	KOR	Room 2
Chair(s)	Ho Jun Chin <i>Seoul National University, Korea</i> Ho Seok Koo <i>Inje University, Korea</i>			
OR 08 CK-01 ~ OR 08 CK-12				
08:30-10:30	Dialysis Nurse Course 1	[NUR 01]	KOR	Room 3
Chair(s)	Chang Suk Lee <i>Dankook University Hospital, Korea</i>			
NUR 01-01	Infection control	Jin-hee Han <i>University of Ulsan, Korea</i>		
NUR 01-02	Disaster preparedness: for medical assistance	Han Joo Choi <i>Dankook University Hospital, Korea</i>		
NUR 01-03	A comparative study of citrate-enriched bicarbonate based dialysate on blood pressure and heparin requirements and hemodialysis adequacy in maintenance hemodialysis patients	Young Ok Choi <i>Kyung Hee University Hospital at Gangdong, Korea</i>		

Detailed Program

08:30-10:30	Common Issues Confronting During Online Hemodiafiltration	[HDF]	KOR	Room 4
Chair(s)	Sug Kyun Shin Young-il Jo	National Health Insurance Service Ilsan Hospital, Korea Konkuk University, Korea		

HDF-01	Mode of HDF - which is good: pre- or post-dilution?	Kyubok Jin Keimyung University, Korea		
HDF-02	Dose of HDF - how to achieve high convection volume	Young-Ki Lee Hallym University, Korea		
HDF-03	Complications during online HDF	Jai Won Chang University of Ulsan, Korea		
HDF-04	Cost - medical reimbursement	Yang Wook Kim Inje University, Korea		

08:30-10:40	Hands-on Session	KOR	Grand Ballroom
Hand-01	Basic setting for vascular access ultrasonography	Hoon Suk Park The Catholic University of Korea, Korea	

- Clinical anatomy for vascular access
- Basic setting for vascular access ultrasonography
- Flow rate assessment of brachial artery

11:00-12:30	Blood Pressure in CKD/ESRD Patients	[PHY 02]	KOR	Room 1
Chair(s)	Yoon Chul Jung	Bundang Jesaeng Hospital, Korea		

PHY 02-01	Hypertension in CKD/ESRD; Korean perspectives	Ran-hui Cha National Medical Center, Korea		
PHY 02-02	Blood pressure variability and its impact on CKD/ESRD patients	Jung Pyo Lee Seoul National University, Korea		
PHY 02-03	Antihypertensive medication use in the transition from CKD to dialysis	Jung Eun Lee Sungkwan University, Korea		

11:00-13:00	Oral Communications (Transplantation 2)	[OR 09]	KOR	Room 2
Chair(s)	Suk Young Kim Chan-Duck Kim	The Catholic University of Korea, Korea Kyungpook National University, Korea		

OR 09 TL-01 ~ OR 09 TL-12

11:00-13:00	Dialysis Nurse Course 2	[NUR 02]	KOR	Room 3
Chair(s)	Sang-Youb Han <i>Inje University, Korea</i> Young-Ki Lee <i>Hallym University, Korea</i>			
NUR 02-01	Dialysis for the aging populations	Ji Eun Lee <i>Wonkwang University, Korea</i>		
NUR 02-02	Management of hyperkalemia in dialysis patients: what is on the horizon?	Young Youl Hyun <i>Sungkunkwan University, Korea</i>		
NUR 02-03	Update on uremic toxins: concepts and novelties	So Young Lee <i>Eulji University, Korea</i>		
11:00-13:00	Serum Electrolytes as Predictors for Clinical Outcomes	[FL 02]	KOR	Room 4
Chair(s)	Gheun-Ho Kim <i>Hanyang University, Korea</i> Kyung Hwan Jeong <i>Kyung Hee University, Korea</i>			
FL 02-01	Prognostic significance of hyponatremia in dialysis patients	Tae Ik Chang <i>National Health Insurance Service Ilsan Hospital, Korea</i>		
FL 02-02	Outcomes in hospitalized patients with dyskalemia	Sejoong Kim <i>Seoul National University, Korea</i>		
FL 02-03	Optimal serum bicarbonate levels in CKD patients	Eun Hui Bae <i>Chonnam National University, Korea</i>		
11:10-13:20	Hands-on Session		KOR	Grand Ballroom
Hand-02	US surveillance for vascular access	Sun Ryung Choi <i>Sahmyook Medical Center, Korea</i>		
	<ul style="list-style-type: none"> • Surveillance for vascular access • Detection of problems in vascular access • Establishment of therapeutic strategy 			

Oral Communications List

May 17 (Thu)			
15:00-17:00	Oral Communications (Dialysis 1)	[OR 01]	KOR Room 2
OR 01 DL-01	The association of serum mineral parameters with mortality in hemodialysis patients: Data analysis from Korean end-stage renal disease registry	Yunmi Kim <i>Dongguk University Gyeongju Hospital, Korea</i>	
OR 01 DL-02	Current Status of Clinical Practice for Hemodialysis Vascular Access in Korea: Observational study based on Korean Health Insurance Database	Hyung Seok Lee <i>Hallym University Sacred Heart Hospital, Korea</i>	
OR 01 DL-03	Trabecular bone score may manifest as chronic kidney disease-mineral and bone disorder (CKD-MBD) phenotype reciprocal to major cardiovascular outcome	Hyojin Yun <i>Ajou University Hospital, Korea</i>	
OR 01 DL-04	Pre-hemodialysis blood urea nitrogen to creatine ratio for prediction of mortality in hemodialysis patients	Ha Yeon Kim <i>Chonnam National University Hospital, Korea</i>	
OR 01 DL-05	Cancer incidence and characteristics in the dialysis patients; a Korean nationwide study	Soon Kil Kwon <i>Chungbuk National University College of Medicine, Korea</i>	
OR 01 DL-06	End stage renal disease and risk of tuberculosis: a nationwide cohort study	Yu-Mi Yang <i>Chungbuk National University Hospital, Korea</i>	
OR 01 DL-07	Factors associated with low trabecular bone scores in patients with end-stage renal disease	Da Won Kim <i>The Catholic University of Korea, Incheon St. Mary's Hospital, Korea</i>	
OR 01 DL-08	Impact of Quality-of-Life after Dialysis Start on Survival: A Prospective Cohort Study in Korea	Jeonghwan Lee <i>SMG-SNU Boramae Medical Center, Korea</i>	
OR 01 DL-09	Variability of Total Cholesterol is associated with Clinical Outcomes in ESRD patients	Minyoung Kim <i>The Catholic University of Korea, Yeouido St. Mary's Hospital, Korea</i>	
OR 01 DL-10	Analysis of infection Rate According to Natural Killer Cell Activity in Hemodialysis Patients	Seok-hyung Kim <i>Gangnam Severance Hospital, Korea</i>	
OR 01 DL-11	Effect of Nutritional Status Assessed Using Subjective Global Assessment related to Change of Anemia in Incident Dialysis Patients	Tae Hyun Ban <i>The Catholic University of Korea, Seoul St. Mary's Hospital, Korea</i>	
OR 01 DL-12	The combination effect of serum albumin and phosphate levels on all-cause mortality in peritoneal dialysis patients	Jong Hyun Jhee <i>Severance Hospital, Korea</i>	

May 18 (Fri)

08:00-10:00	Oral Communications (Acute Kidney Injury)	[OR 02]	ENG Room 2
OR 02 AK-01	Selective digestive decontamination prevents renal ischemic injury and distant organ damage via regulatory T cells expansion	Jihyun Yang <i>Korea University Anam Hospital, Korea</i>	
OR 02 AK-02	VISTA-dependent role of resident macrophages in kidney homeostasis and inflammation	Seung Seok Han <i>Seoul National University Hospital, Korea</i>	
OR 02 AK-03	Construction of mesenchymal stem cells secreting angiogenic or anti-inflammatory factors by ZFN and CRISPR/Cas9 genome-editing technology for the treatment of acute kidney injury	Hye-Jeong Park <i>Kyungpook National University School of Medicine, Korea</i>	
OR 02 AK-04	Granulocyte-colony stimulating factor ameliorates renal ischemia-reperfusion injury by recruiting myeloid-derived suppressor cells to kidney	Ji-Jing Yan <i>Seoul National University Hospital, Korea</i>	
	<i>*KSN Grant(Young Investigator Research, 2017)</i>		
OR 02 AK-05	Longer-interval regimen of colistin reduces nephrotoxicity in kidney-on-a-chip	Kipyo Kim <i>Seoul National University Bundang Hospital, Korea</i>	
OR 02 AK-06	Major adverse cardiovascular events and clinical outcomes in intensive care unit patients with acute renal replacement therapy	Sehoon Park <i>Seoul National University Hospital, Korea</i>	
OR 02 AK-07	Tamoxifen attenuates renal fibrosis through Src kinase in obstructive nephropathy in rats	Chang Seong Kim <i>Chonnam National University Hospital, Korea</i>	
	<i>*KSN Grant(ChongKunDang pharmaceutical Young Investigator Research, 2016)</i>		
OR 02 AK-08	Cilastatin preconditioning attenuates oxidative stress and apoptosis through hypoxia inducible factor-1 α activation in renal ischemia-reperfusion injury	Yu Ah Hong <i>The Catholic University of Korea, Daejeon St. Mary's Hospital, Korea</i>	
OR 02 AK-09	Fluid balance after two days of continuous renal replacement therapy initiation is a predictor of 28-day mortality – multicenter cohort study	Jung Nam An <i>SMG-SNU Boramae Medical Center, Korea</i>	
OR 02 AK-10	Inhibition of CXCR3 expression through blockade of STAT3 alpha signaling down-regulate inflammation of renal ischemia-reperfusion injury	Jae Yoon Park <i>Dongguk University Ilsan Hospital, Korea</i>	
OR 02 AK-11	Epidemiology of continuous renal replacement therapy in Korea: Results from the national health insurance service claims database from 2005 to 2016	Sehoon Park <i>Seoul National University Hospital, Korea</i>	
OR 02 AK-12	TGF- β 1 causes Nox4 dependent hypoxia induced apoptosis in human kidney proximal tubular epithelial cells	Se Hee Yoon <i>Konyang University Hospital, Korea</i>	

Oral Communications List

14:00-16:00	Oral Communications (Diabetes and Obesity)	[OR 03]	ENG	Room 2
OR 03 DO-01	The role of PCSK9 on the glomerular lipid accumulation and renal injury in the diabetic kidney disease	Mei-yan Wu <i>The First Hospital of Jilin University, China</i>		
OR 03 DO-02	Glycemic Status and Mortality in Chronic Kidney Disease According to Transition vs. Non-Transition to Dialysis	Connie Rhee <i>University of California Irvine, United States</i>		
OR 03 DO-03	Exosomal microRNA signature of obesity using RNA sequencing	Haekyung Lee <i>Soonchunhyang University College of Medicine, Korea</i>		
OR 03 DO-04	The protection effect of diabetic nephropathy by SAR131675 in db/db mice	Seon Deok Hwang <i>Inha University Hospital, Korea</i>		
OR 03 DO-05	Soluble cMet levels in urine are a significant prognostic biomarker for diabetic nephropathy	Yong Chul Kim <i>Seoul National University Hospital, Korea</i>		
OR 03 DO-06	Chloroquine and amodiaquine enhance AMPK phosphorylation and improve mitochondrial fragmentation in diabetic tubulopathy	So-Young Lee <i>Bundang CHA General Hospital, Korea</i>		
OR 03 DO-07	Association between weight reduction and developing cardiovascular event among the general population	Hae Ryoung Yun <i>Severance Hospital, Korea</i>		
OR 03 DO-08	Poor glycemic control increases mortality in elderly dialysis patients with diabetes - a nationwide prospective cohort in Korea	Jung Nam An <i>SMG-SNU Boramae Medical Center, Korea</i>		
OR 03 DO-09	Efficacy and Safety of Metformin in the Patients with Type 2 Diabetic Chronic Kidney Disease	Soie Kwon <i>Seoul National University Hospital, Korea</i>		
	<i>*KSN Grant(Kyowa Hakko Kirin Korea Young Investigator Research, 2017)</i>			
OR 03 DO-10	Identification of myeloid-derived suppressor cells in type 2 diabetic nephropathy	Seung Seok Han <i>Seoul National University Hospital, Korea</i>		
OR 03 DO-11	Bariatric surgery reduces elevated urinary mitochondrial DNA copy number in obese patients	Haekyung Lee <i>Soonchunhyang University Seoul Hospital, Korea</i>		
OR 03 DO-12	Association between Unintended Weight Loss and Incident Chronic Kidney Disease in People with Metabolic Syndrome: A Community-Based Cohort Study	Hae Ryoung Yun <i>Severance Hospital, Korea</i>		

16:00-18:00	Oral Communications (Renal physiology, Hypertension and Electrolyte disorders)	[OR 04]	ENG Room 2
OR 04 RH-01	Long-term administration of empagliflozin contributes to polyuria via transcriptional and post-translational control of aquaporin-2 in diabetic rat kidneys	Sungjin Chung <i>School of Medicine, The Catholic University of Korea, Korea</i>	
OR 04 RH-02	TAZ is required for the patterning of the juxtamedullary nephron in kidney development	Wan-Young Kim <i>Cell Death Disease Research Center, College of Medicine, The Catholic University of Korea, Korea</i>	
OR 04 RH-03	Histone deacetylase inhibitor, CG200745, attenuates renal fibrosis in DOCA-salt Hypertensive Rats	Eun Hui Bae <i>Chonnam National University Hospital, Korea</i>	
OR 04 RH-04	Association between Systolic Blood Pressure and Incident Chronic Kidney Disease: A Nationwide Cohort Study	Cheol Ho Park <i>Yonsei University College of Medicine, Korea</i>	
OR 04 RH-05	Metabolic acidosis and clinical outcomes in CKD patients – multicenter large cohort study using instrumental variable analysis	Jung Nam An <i>SMG-SNU Boramae Medical Center, Korea</i>	
OR 04 RH-06	Antihypertensive effect of empagliflozin in salt-loaded uninephrectomized rat	Sua Kim <i>Hanyang University College of Medicine, Korea</i>	
OR 04 RH-07	In scilico pharmacological assessment of nifedipine and mibefradil in modulating action potential in guinea pig ureter smooth muscle cells	Chitaranjan Mahapatra <i>Indian Institute of Technology Bombay, India</i>	
OR 04 RH-08	Three Cases of Multicentric Carpotarsal Osteolysis Syndrome	Peong Gang Park <i>Seoul National University Hospital, Korea</i>	
OR 04 RH-09	Blood pressure control in elderly dialysis patients; a prospective nation-wide ESRD cohort study	Yong Chul Kim <i>Seoul National University Hospital, Korea</i>	
OR 04 RH-10	Tolvaptan use in hyponatremia: short-term observational outcome analysis	Ha Yeon Kim <i>Chonnam National University Hospital, Korea</i>	
OR 04 RH-11	High variability of initial 24-hour blood pressure is associated with mortality in critically ill patients	Kyoung Jin Choi <i>Soonchunhyang University Seoul Hospital, Korea</i>	
OR 04 RH-12	Serum levels of sodium and potassium are independently associated with the degree of coronary artery calcification: A single-center cross-sectional study	Ki Sung Kim <i>Gangnam Severance Hospital, Korea</i>	

Oral Communications List

May 19 (Sat)			
08:00-10:00	Oral Communications (Dialysis 2)	[OR 05]	ENG Room 2
OR 05 DL-01	Effects of Citrate Versus Acetate Dialysate on Cell Damage, Uremic Toxin, and Inflammation in Patients with Maintenance Hemodialysis	Su Woong Jung <i>Kyung Hee University Medical Center, Korea</i>	
OR 05 DL-02	Association of Thyroid Status Prior To Transition to End-Stage Renal Disease with Early Dialysis Mortality	Connie Rhee <i>University of California Irvine, United States</i>	
OR 05 DL-03	Impact of dialysate calcium concentration on intradialytic left ventricular systolic function and marker of vascular calcification: A randomized, double-blinded, non-inferiority study (CALLISTO study)	Thanawat Vongchaiudomchoke <i>Division of Nephrology, Department of Internal Medicine, Thailand</i>	
OR 05 DL-04	The impact of sunlight exposure on mortality of ESRD patients: a bi-directional case-crossover study in the Korean nation-wide ESRD cohort	Yong Chul Kim <i>Seoul National University Hospital, Korea</i>	
OR 05 DL-05	The impact of hyperuricemia on kidney failure and mortality in a multi-center CKD cohort; an instrumental variable analysis	Yong Chul Kim <i>Seoul National University Hospital, Korea</i>	
OR 05 DL-06	Differential effect of hemoglobin level on patient mortality according to patient age in end stage renal disease patients	Eun Jeong Ko <i>The Catholic University of Korea, Seoul St. Mary's Hospital, Korea</i>	
OR 05 DL-07	Intermittent and continuous renal replacement therapy in acute kidney injury: A comparative assessment of cost effectiveness	Ambrish Singh <i>Independent Early Career Research, India</i>	
OR 05 DL-08	<i>*KSN Grant(BAXTER, 2016)</i> The association between neutrophil activation marker and arteriovenous fistula stenosis	Hye Min Choi <i>Myongji Hospital, Korea</i>	
OR 05 DL-09	GX-E2 versus CERA for Anemia in Patients Receiving Maintenance Peritoneal Dialysis: A Phase 2, Randomized, Multi-center, Active-comparator, Dose-finding, Safety and Efficacy Study	Eun Jeong Ko <i>The Catholic University of Korea, Seoul St. Mary's Hospital, Korea</i>	
OR 05 DL-10	The role of suppression of tumorigenicity-2 (ST2) in the peritoneal fibrosis and peritoneal dialysis (PD) outcomes	Yong Chul Kim <i>Seoul National University Hospital, Korea</i>	
OR 05 DL-11	Extreme Poverty and CAPD: Challenges and 5 year outcomes from India's first PPP Peritoneal Dialysis Programme	Mayoor Prabhu <i>Kasturba Medical College Mangalore, India, India</i>	
OR 05 DL-12	Bioimpedance-guided fluid management in peritoneal dialysis patients: a randomized controlled trial	Hye Eun Yoon <i>The Catholic University of Korea, Incheon St. Mary's Hospital, Korea</i>	

10:00-12:00	Oral Communications (Chronic Kidney Disease 1)	[OR 06]	ENG Room 2
OR 06 CK-01	Autophagy deficiency in endothelial cells increases the susceptibility of renal injury from aging	Yong Kyun Kim <i>The Catholic University of Korea, Bucheon St. Mary's Hospital, Korea</i>	
OR 06 CK-02	Autophagy in renal distal tubules attenuates tubulointerstitial fibrosis through regulating TGF- β and IL1- β after unilateral ureteral obstruction	Yong Kyun Kim <i>The Catholic University of Korea, Bucheon St. Mary's Hospital, Korea</i>	
OR 06 CK-03	Transplantation of kidney organoids derived from human iPSCs enhances nephrogenesis	Sun Ah Nam <i>Cell Death Disease Research Center, College of Medicine, The Catholic University of Korea, Korea</i>	
OR 06 CK-04	RNA-seq profiling of microdissected glomeruli in IgA nephropathy patients	Sehoon Park <i>Seoul National University Hospital, Korea</i>	
OR 06 CK-05	Intestinal barrier disruption and dysregulated mucosal immunity contribute to kidney fibrosis in CKD	Jihyun Yang <i>Korea University Anam Hospital, Korea</i>	
OR 06 CK-06	cMet agonistic antibody attenuates renal fibrosis in obstructive nephropathy	Yong Chul Kim <i>Seoul National University Hospital, Korea</i>	
OR 06 CK-07	Association between the ACTY2 polymorphisms and risk of IgAN in a Chinese Han population	Jiali Wei <i>Hainan general hospital, China</i>	
OR 06 CK-08	Newly Designed Recombinant Bone Morphogenetic Protein 7 is a Potential Therapeutic in Renal Tubulointerstitial Fibrosis	Seonghun Kim <i>Yonsei University College of Medicine, Korea</i>	
OR 06 CK-09	COMBINED TREATMENT WITH OMEGA-3 FATTY ACID AND MENAQUINONE-7 ATTENUATES OSTEOPENIA AND SARCOPENIA IN ADENINE AND LOW PROTEIN DIET INDUCED UREMIC RATS	Wonsuk An <i>Dong-A University Hospital, Korea</i>	
OR 06 CK-10	Relationship Between Complement Activation and the Oxford Classification Score and Their Combined Effects on Renal Outcome in Early Stage IgA nephropathy	Seohyun Park <i>College of Medicine, Institute of Kidney Disease Research, Yonsei University, Korea</i>	
OR 06 CK-11	Histone deacetylase inhibitor, CG200745 attenuates renal fibrosis in obstructive kidney disease	Hong Sang Choi <i>Chonnam National University Hospital, Korea</i>	
	<i>*KSN Grant(Young Investigator Research, 2017)</i>		
OR 06 CK-12	Role of retinoic acid signaling in chronic kidney disease	Jin Joo Cha <i>Korea University Ansan Hospital, Korea</i>	

Oral Communications List

16:00-18:00	Oral Communications (Transplantation 1)	[OR 07]	ENG	Room 2
OR 07 TL-01	Validation study of operational tolerance signature in Korean kidney transplant recipients	Yu Ho Lee <i>Kyung Hee University Hospital at Gangdong, Korea</i>		
OR 07 TL-02	Discovery and validation of urinary mRNA signatures for non-invasive diagnosis of acute rejection	Jungwoo Seo <i>Kyung Hee University Hospital at Gangdong, Korea</i>		
OR 07 TL-03	Clinical significance of CD161+CD4+ T cells in the development of chronic antibody-mediated rejection in kidney transplant recipients	Kyoung-Woon Kim <i>The Catholic University of Korea, Seoul St. Mary's Hospital, Korea</i>		
OR 07 TL-04	A New risk stratification score for deceased donor kidneys in Korea	Tai Yeon Koo <i>Seoul National University Hospital, Korea</i>		
OR 07 TL-05	Effect of Klotho on Autophagy Clearance in Tacrolimus-induced Renal Injury	Sun-Woo Lim <i>The Catholic University of Korea, Seoul St. Mary's Hospital, Korea</i>		
OR 07 TL-06	Treatment of chronic hepatitis C infection in renal transplant recipients: Our experience in developing world	Sourabh Sharma <i>Army Hospital Research & Referral, Delhi, India, India</i>		
OR 07 TL-07	A multicenter, open-label, randomized, parallel study to evaluate the prevention of New Onset of Diabetes Mellitus after Renal Transplantation following Everolimus therapy with co-administration of low-dose Tacrolimus (PROTECT)	Ji-Yeun Chang <i>The Catholic University of Korea, Seoul St. Mary's Hospital, Korea</i>		
OR 07 TL-08	Self in vivo production of a synthetic biological drug, anti-IL-2R α /IL-10 fusion protein using minicircles in skin allograft model	Yoo-Jin Shin <i>The Catholic University of Korea, Seoul St. Mary's Hospital, Korea</i>		
OR 07 TL-09	Effect of Dual Inhibition of Dipeptidyl Peptidase IV (DPP4) and Sodium/glucose Cotransporter (SGLT2) on Tacrolimus-Induced Diabetic Rats	Eun Jeong Ko <i>The Catholic University of Korea, Seoul St. Mary's Hospital, Korea</i>		
OR 07 TL-10	Involvement of genetic variation and related gene expression changes on acute rejection in renal transplant recipients	Hyeon Seok Hwang <i>Kyung Hee University Medical Center, Korea</i>		
OR 07 TL-11	A Peripheral Blood Transcriptome Analysis and Development of Classification Model for Predicting Antibody-Mediated Rejection versus Accommodation in ABO-incompatible Kidney Transplant Patients	Hee Jung Jeon <i>Kangdong Sacred Heart Hospital, Korea</i>		
OR 07 TL-12	<i>*KSN Grant (Young Investigator Research, 2017)</i> Chemokine Receptor 5 Blockade Modulates Macrophage Trafficking in Renal Ischemic Reperfusion Injury	Kyung Don Yoo <i>Dongguk University Gyeongju Hospital, Korea</i>		

May 20 (Sun)

08:30-10:30	Oral Communications (Chronic Kidney Disease 2)	[OR 08]	KOR Room 2
OR 08 CK-01	PGC-1alpha protects TGF-β induced fibrosis by suppressing let7c-mediated TGFβRI expression	Hoon-In Choi Chonnam National University Medical School, Korea	
OR 08 CK-02	Inhibition of p300/CBP-associated factor attenuates renal tubulointerstitial fibrosis through modulation of NF-κB and Nrf2	Sungjin Chung School of Medicine, The Catholic University of Korea, Korea	
OR 08 CK-03	A clinical significance of crescent formation in IgA nephropathy	Sehoon Park Seoul National University Hospital, Korea	
OR 08 CK-04	Urinary myo-inositol as a potential marker for focal segmental glomerulosclerosis: NMR-based metabolomics study	Jung Nam An SMG-SNU Boramae Medical Center, Korea	
OR 08 CK-05	Effect of pentoxifylline on pericyte in aging mice kidney	Hyung Duk Kim The Catholic University of Korea, Seoul St. Mary's Hospital, Korea	
OR 08 CK-06	Higher muscle to fat ratio is associated with lower CKD development risk in subjects with normal renal function: Community based prospective cohort study	Jong Hyun Jhee Severance Hospital, Korea	
OR 08 CK-07	Effect of statin on cardiovascular complications in chronic kidney disease patients: A Network Meta-Analysis	Seon Deok Hwang Inha University Hospital, Korea	
OR 08 CK-08	The role of periostin in aging process	Young Wook Choi SMG-SNU Boramae Medical Center, Korea	
OR 08 CK-09	Protective effect of DNA methyltransferase inhibitor against progressive renal tubulointerstitial inflammation and fibrosis	Eun Sil Koh The Catholic University of Korea, Yeouido St. Mary's Hospital, Korea	
OR 08 CK-10	The role of fumarate in the progression of membranous nephropathy: metabolomics analysis and its in-vitro validation	Hyung Ah Jo Inje University Ilsan Paik Hospital, Korea	
OR 08 CK-11	Knockdown of Peroxiredoxin V (Prdx V) exacerbates unilateral ureteral obstruction-induced renal fibrosis	Hoon-In Choi Chonnam National University Medical School, Korea	
OR 08 CK-12	The effects of high salt or high fat diet on murine intrarenal immunologic micromilieu	Junseok Jeon Samsung Medical Center, Korea	

Oral Communications List

11:00-13:00	Oral Communications (Transplantation 2)	[OR 09]	KOR Room 2
OR 09 TL-01	Impact of Serum Vitamin D Status on Vascular Calcification after Kidney Transplantation	Jung Hwa Ryu <i>Seoul National University Hospital, Korea</i>	
OR 09 TL-02	Impact of acute kidney injury in elderly deceased donor on the post-transplant clinical outcomes: Multicenter cohort study	Jeong Ho Kim <i>The Catholic University of Korea, Daejeon St. Mary's Hospital, Korea</i>	
OR 09 TL-03	Characteristics of Recipients Who Discontinued Antihypertensive Medication within 1-Year after Kidney Transplantation: Results from the KoreaN Cohort Study for Outcome in Patients With Kidney Transplantation (KNOW-KT) Study	Seong Sik Kang <i>Keimyung University School of Medicine, Korea</i>	
OR 09 TL-04	Long term risks for kidney donors: ESRD and mortality	Yaerim Kim <i>Seoul National University Hospital, Korea</i>	
OR 09 TL-05	Differentiation Efficiency of Human Induced Pluripotent Stem Cell (iPSC) to Endothelial Cells in Patients with End Stage Renal Disease (ESRD)	Eun Jeong Ko <i>The Catholic University of Korea, Seoul St. Mary's Hospital, Korea</i>	
OR 09 TL-06	Clinical Experience of Latent Tuberculosis Infection in Living Donor Kidney Transplant Recipients	Tae Hyun Ban <i>The Catholic University of Korea, Seoul St. Mary's Hospital, Korea</i>	
OR 09 TL-07	Impact of ABO incompatible kidney transplantation on retransplantation	Hyung Duk Kim <i>The Catholic University of Korea, Seoul St. Mary's Hospital, Korea</i>	
OR 09 TL-08	Targeting class I histone deacetylase in renal tubular epithelial cells inhibits priming inflammatory responses	Sun Woo Kang <i>Inje University Busan Paik Hospital, Korea</i>	
OR 09 TL-09	Low Pre-transplant Intact Parathyroid Hormone Is A Risk Factor for Bone Loss after Kidney Transplantation	Seohyun Park <i>College of Medicine, Institute of Kidney Disease Research, Yonsei University, Korea</i>	
OR 09 TL-10	The potential role of IL-33/ST2 in renal allograft rejection	Mi Yeon Yu <i>Seoul National University Hospital, Korea</i>	
OR 09 TL-11	The risk factors of persistent hyperparathyroidism in children who received kidney transplantation	Joo Hoon Lee <i>Asan Medical Center Children's Hospital, University of Ulsan College of Medicine, Korea</i>	
OR 09 TL-12	Comparison of the impact of Kidney Donor Profile Index on the Post-Transplant Clinical Outcomes between Elderly and Young Kidney Transplant Recipients; Multicenter Cohort Study	Woo Yeong Park <i>Keimyung University School of Medicine, Keimyung University Kidney Institute, Korea</i>	

Poster Presentation List

May 18 (Fri)

Acute Kidney Injury

Presentation No.	Title	Presenting Author
PAK 001	Risk Prediction of Contrast Induced Nephropathy in Cancer patients undergoing Contrast Enhanced Computed Tomography under Preventive Measures	Junseok Jeon <i>Samsung Medical Center, Korea</i>
PAK 002	Aristolochic acid-containing herbal medicine enhances the kidney oxidative stress and apoptosis in mice	Yi Quan <i>The Catholic University of Korea, Seoul St. Mary's Hospital, Korea</i>
PAK 003	Modified APACHE II and SOFA scores in patients requiring continuous renal replacement therapy	Yaerim Kim <i>Seoul National University Hospital, Korea</i>
PAK 004	Renal effects of intentional self-poisoning with Chlorophenoxy herbicide [2-Methyl-4-chlorophenoxyacetic acid (MCPA)] – A case report	Thilini Wijerathna <i>Faculty of Medicine, University of Peradeniya, Peradeniya, Sri Lanka</i>
PAK 005	Acute kidney injury following ingestion of <i>Gloriosa superba</i> : A review	Thilini Wijerathna <i>Faculty of Medicine, University of Peradeniya, Peradeniya, Sri Lanka</i>
PAK 006	Renal outcomes of laparoscopic versus open surgery in patients with rectal cancer: a propensity score analysis	Jin Hyuk Paek <i>Seoul National University Bundang Hospital, Korea</i>
PAK 007	Long-term outcomes of acute tubular necrosis and acute tubulointerstitial nephritis	Se Won Oh <i>Korea University Anam Hospital, Korea</i>
PAK 008	Comparison of clinical outcomes between Patients with and without Hematologic Malignancy after application of Continuous Renal Replacement Therapy	Tae Hyun Ban <i>The Catholic University of Korea, Seoul St. Mary's Hospital, Korea</i>
PAK 009	What is the Optimal Blood Pressure in Patients with Acute Kidney Injury?	Seon Ha Baek <i>Hallym University Dongtan Sacred Heart Hospital, Korea</i>
PAK 010	Fimasartan attenuates ischemia-reperfusion injury by modulating inflammation-related apoptosis	Jang-Hee Cho <i>Kyungpook National University Hospital, Korea</i>
PAK 011	Anti-fibrotic and Anti-apoptotic effects of naringin on Cisplatin induced renal injury via Nrf2/PI3K/Akt signaling pathway	Prakash Bhatt <i>Jamla Hamdard, India</i>
PAK 012	A case of vancomycin-induced nephrotoxicity successfully treated with hemodiafiltration	Hyunju Yoon <i>Presbyterian Medical Center, Korea</i>

Poster Presentation List

Presentation No.	Title	Presenting Author
PAK 013	The effect of mesenchymal stem cell-derived exosome on cisplatin-induced acute kidney injury	Yong Weon Yi <i>ExoCoBio Inc., Korea</i>
PAK 014	Systolic and diastolic dysfunctions affect kidney outcomes in hospitalized patients	Jae Shin Choi <i>Seoul National University Hospital, Korea</i>
PAK 015	Hyperuricemia is associated with acute kidney injury and all-cause mortality in hospitalized patients	Min Woo Kang <i>Seoul National University Hospital, Korea</i>
PAK 016	The Hantaan virus vaccine efficacy on progression of the hemorrhagic fever with renal syndrome (HFRS)	Yongjin Yi <i>Korean Armed Forces Capital Hospital, Korea</i>
PAK 017	Insomnia and Acute Kidney Injury	Eun Jin Bae <i>Gyeongsang National University Changwon Hospital, Korea</i>
PAK 018	Acute Kidney Injury due to Increased Intra-abdominal Pressure	Eun Jin Bae <i>Gyeongsang National University Changwon Hospital, Korea</i>
PAK 019	An woman with proteinuria after tick bite	Hyunsoo Joh <i>Inje University Sanggye Paik Hospital, Korea</i>
PAK 020	Outcomes of the patients who underwent renal replacement therapy during the perioperative period of cardiac surgery	Soojin Lee <i>Seoul National University Hospital, Korea</i>
 PAK 021	Surface engineered nanocapsules of Umbelliferone via PI3K/AKT/Nrf2 are potential candidate for Acute kidney alignments treatment	Chauhan Deeksha <i>University of Allahabad, India</i>

May 19 (Sat)

Acute Kidney Injury

Presentation No.	Title	Presenting Author
PAK 022	High calcium-phosphorus product level increases the risk of acute kidney injury, end-stage renal disease, and mortality in hospitalized patients	Hongran Moon <i>Seoul National University Hospital, Korea</i>
PAK 023	Acute kidney injury and mortality in elderly population with femoral neck fracture	Woori Cho <i>Korea University Anam Hospital, Korea</i>
PAK 024	Changing epidemiologic trends of critically ill patients with acute kidney injury: population-based cohort study in Korea between 2008 and 2015	Subin Hwang <i>Inje University Seoul Paik Hospital, Korea</i>

Presentation No.	Title	Presenting Author
PAK 025	Predictive factors for successful discontinuation of continuous renal replacement therapy in acute kidney injury	Song In Baeg Samsung Medical Center, Korea
PAK 026	Acute kidney injury in patient with extramedullary plasmacytoma	Ji Hyun Jeon Dankook University Hospital, Korea
PAK 027	Renal prognosis is related with delta neutrophil index in patients with alcoholic ketoacidosis	Jae Won Yang Yonsei University Wonju College of Medicine, Korea
PAK 028	Omega-3 Polyunsaturated Fatty Acids Attenuate Cisplatin-induced Nephrotoxicity via Enhancement of Autophagy Flux	Young Rok Ham Chungnam National University Hospital, Korea
PAK 029	Ethylene Glycol intoxication with Acute Renal Injury: Successful Recovery by Fomepizole and Renal Replacement Therapy	Chang Hun Song Gongju Medical Center, Korea
PAK 030	Idiopathic Systemic Capillary leak syndrome – A Case Report	Jin Ho Hwang Chung-Ang University Hospital, Korea
PAK 031	Clinical Impact of Calcitriol in the Patients Requiring Post Operative Continuous Renal Replacement Therapy After Successful Liver Transplantation	Seong Hoon Kim Asan Medical Center, University of Ulsan College of Medicine, Korea
PAK 032	ASSOCIATION OF HEPATIC DYSFUNCTION AND THE MORTALITY IN CRITICALLY ILL PATIENTS ON CONTINUOUS RENAL REPLACEMENT THERAPY	Ha Nee Jang Gyeongsang National University Hospital, Korea
PAK 033	Outcomes of the patients requiring perioperative renal replacement therapy during liver transplantation	Soojin Lee Seoul National University Hospital, Korea
PAK 034	Interleukin-22 inhibits H ₂ O ₂ induced apoptosis in HK-2 cell through suppression of ER stress	Jin Seok Jeon Soonchunhyang University College of Medicine, Korea
PAK 035	Primary cilium length and urine primary cilia can be an indicative of acute kidney injury	Min Jung Kong Kyungpook National University School of Medicine, Korea
 PAK 036	Inhibition of Rac1-GTPase attenuates renal ischemia/reperfusion-induced injury	Mi Ra Noh Kyungpook National University School of Medicine, Korea
PAK 037	TonEBP transcription factor mediates oxidative damages in the kidney in response to ischemia-reperfusion	Eunjin Yoo UNIST, Korea

Poster Presentation List

Presentation No.	Title	Presenting Author
PAK 038	Acute kidney injury of nephrotic syndrome in children: Retrospective study	Mi Young Kim <i>Seoul National University Hospital, Korea</i>
PAK 039	Preoperative anemia is a predictor of acute kidney injury and mortality after coronary artery bypass graft surgery	Hyunjeong Cho <i>Chungbuk National University Hospital, Korea</i>
PAK 040	Factors associated with very early mortality in critically ill patients with continuous renal replacement therapy	Kee Youn Kyung <i>Hangang Sacred Heart Hospital, Korea</i>
PAK 041	Hypercapnic Acidosis Attenuates Ischemia-Reperfusion Injury Associated Acute Kidney Injury in Rats	Ming-Tso Yan <i>Cathay General Hospital, Taiwan</i>

May 18 (Fri)

Dialysis

Presentation No.	Title	Presenting Author
PDL 001	Unstable Pseudoaneurysm Treatment with Stent-Graft: Case	Jin Ho Lee <i>Bon seng Hospital, Korea</i>
PDL 002	Right versus Left insertion of peritoneal dialysis catheters in end stage renal disease patients by open surgical technique	Jin Ho Lee <i>Bon seng Hospital, Korea</i>
PDL 003	Risk of CRBSI in CRRT	Jihyun Yang <i>Korea University Anam Hospital, Korea</i>
PDL 004	Clinical utility of oxidative stress regulating protein APX-501 as a biomarker for the progression of atherosclerosis and its relationship with systemic inflammation in stable peritoneal dialysis patients	Jin Joo Cha <i>Korea University Ansan Hospital, Korea</i>
PDL 005	Survival in Peritoneal Dialysis Patients Who Initiated Immediately Dialysis After Catheter Implantation Using Percutaneous Method	Young-Kyung Ko <i>Konkuk University Medical Center, Korea</i>
PDL 006	Salvage Treatment of Dysfunctional Forearm Arteriovenous Fistula Due to Small Caliber Inflow Artery by Percutaneous transluminal Angioplasty	Hoon Suk Park <i>The Catholic University of Korea, St. Vincent's Hospital, Korea</i>
PDL 007	Time-specific effects of predialytic factors on systolic blood pressure changes during hemodialysis	Sinae Lee <i>Incheon Medical Center, Korea</i>
PDL 008	Risk Factors and Clinical Outcomes Related to Early Onset Peritonitis in Peritoneal Dialysis Patients	Hayeon Park <i>Keimyung University School of Medicine, Korea</i>

Presentation No.	Title	Presenting Author
PDL 009	Nitrogen, urea, protein and non-ure non-protein nitrogen loss in patients with acute kidney injury and chronic kidney disease treated with two forms of continuous renal replacement therapy	Dian Putri Mumpuni Saraswati <i>Hospital, Indonesia</i>
PDL 010	Low phase angle predicts anemia in hemodialysis patients	Jong Hyun Jhee <i>Inha University School of Medicine, Korea</i>
PDL 011	Access flow rate and intra-access static pressure for vascular access surveillance	Hyung Duk Kim <i>The Catholic University of Korea, Seoul St. Mary's Hospital, Korea</i>
PDL 012	Clinical characteristics of patients with refractory ascites after removal of peritoneal dialysis catheter	Ho Jun Lee <i>Korea University Ansan Hospital, Korea</i>
PDL 013	Surface-Engineered PLGA Nanocapsules of Resveratrol with improved biopharmaceutical properties attributes against rat peritonitis model: An Anti-inflammatory therapy	Vikas Kumar <i>Sam Higginbottom University of Agriculture, Technology & Sciences, India</i>
PDL 014	Beneficial and anti-fibrotic effect of surface engineered nano-formulation of crocetin on experimental induced peritoneal fibrosis: novel approaches for peritoneal dialysis	Deeksha Chauhan <i>Allahabad University, India</i>
 PDL 015	Comparison of the risk of fracture in hemodialysis patients with sarcopenia using the FRAX	Heeryong Lee <i>Good Samsun Hospital, Korea</i>
PDL 016	The Effectiveness of fracture risk assessment using FRAX with or without BMD in hemodialysis	Heeryong Lee <i>Good Samsun Hospital, Korea</i>
PDL 017	Nutritional Status in Relation to the Clinical Outcomes of Maintenance Hemodialysis Patient	Martalena Purba <i>Dr Sardjito Hospital, Indonesia</i>
PDL 018	Outcome of open heart surgery in end-stage renal disease patients	Jung Hwa Park <i>Kyungpook National University Hospital, Korea</i>
PDL 019	Continuous ambulatory peritoneal dialysis (CAPD) peritonitis with severe bowel edema caused by <i>Morganella morganii</i>	Jun Young Lee <i>Wonju Severance Christian Hospital, Korea</i>
PDL 020	Beneficial effect of statins in patients receiving chronic hemodialysis following percutaneous coronary intervention. A nationwide retrospective cohort study	Hye Yun Jeong <i>Bundang CHA General Hospital, Korea</i>
PDL 021	Heart rate variability may predict intradialytic hypotension	Samel Park <i>Soonchunhyang University College of Medicine, Korea</i>

Poster Presentation List

Presentation No.	Title	Presenting Author
PDL 022	The Effect of BCAA and Citrate Dialysate on the Nutritional Status of Chronic Hemodialysis Patients	Hyuk Ho Kwon <i>Dr. Kwon's Hemodialysis Clinic, LBL Institute, Korea</i>
PDL 023	The incidence and risk factors of depression in patients with renal replacement therapy: A nationwide population-based study	Hong Sang Choi <i>Chonnam National University Hospital, Korea</i>
PDL 024	RELATION BETWEEN BCM AND ECOCARDIOGRAPHIC PARAMETERS TO REFLECT VOLUME STATUS IN PERITONEAL DIALYSIS Patients	Min Ji Kim <i>Inje University Busan Paik Hospital, Korea</i>
PDL 025	Efficacy And Safety Of Nicotinamide In The Management Of Hyperphosphatemia In Hemodialysis Patients: A Systematic Review Of Randomized Controlled Trials	Md Salman Hussain <i>Jamia Hamdard (Hamdard University), India</i>
PDL 026	Comparison between Brief Food Frequency Questionnaire and Food Record to Assess the Energy and Protein Intake of Hemodialysis Patients at Dr. Sardjito Hospital in Indonesia	Hanifah Wulandari <i>Universitas Gadjah Mada, Indonesia</i>
PDL 027	A Better Choice for Quality of Life: Hemodialysis versus Peritoneal Dialysis	Hee-Yeon Jung <i>Kyungpook National University Hospital, Korea</i>
PDL 028	A Case Report of Liver Infarction after Tamoxifen Use in Encapsulated Peritoneal Fibrosis (EPS) in an Autosomal Dominant Polycystic Kidney Disease (ADPKD) patient	Won Keun Park <i>Chuncheon Sacred Heart Hospital, Korea</i>
PDL 029	Alpha 1-antitrypsin inhibits apoptosis in human peritoneal mesothelial cells	Sang Mi Park <i>Kyungpook National University Hospital, Korea</i>
PDL 030	Idiopathic sudden sensorineural hearing loss in dialysis patients	Sun-myung Kang <i>Asan Medical Center, University of Ulsan College of Medicine, Korea</i>


May 19 (Sat)

Dialysis

Presentation No.	Title	Presenting Author
PDL 031	Body mass index trends in patients undergoing peritoneal dialysis for decades and their effect on patient survival: analysis of data from an end-stage renal disease registry (1985–2014) in Korea	Seon Deok Hwang <i>Inha University Hospital, Korea</i>

Presentation No.	Title	Presenting Author
PDL 032	Impact of intradialytic blood pressure changes on cardiovascular outcomes is independent of the volume status of maintenance hemodialysis patients	Seongyup Yeo <i>Chung-Ang University Hospital, Korea</i>
PDL 033	The role of neutrophil/lymphocyte ratio as a new paradigm to determine hemodialysis initiation	Tae Won Lee <i>Gyeongsang National University Hospital, Korea</i>
PDL 034	Incremental Peritoneal Dialysis is Beneficial in Preserving Residual Renal Function, Compared to Full-dose Peritoneal Dialysis	Yeonhee Lee <i>Seoul National University Hospital, Korea</i>
PDL 035	Impact of liver cirrhosis on the outcomes of peritoneal dialysis	Younglee Jung <i>Seoul National University Hospital, Korea</i>
PDL 036	Relationship between blood myostatin levels and abdominal aortic calcification in patients with dialysis patients	Su Mi Lee <i>Dong-A University, College of Medicine, Korea</i>
PDL 037	Comparison of clinical outcomes between two different erythropoietin-stimulating agents in patients initiating dialysis	Ji-Yeun Chang <i>The Catholic University of Korea, Seoul St. Mary's Hospital, Korea</i>
PDL 038	The status of sarcopenia in peritoneal dialysis patients: A single center study	Ye Won Choi <i>Busan National University Hospital, Korea</i>
PDL 039	A COMPARISON OF MEASURED HEIGHT AND ARM-DEMISPAN, ULNA ESTIMATED HEIGHT AMONG MAINTENANCE HEMODIALYSIS PATIENTS IN DR. SARDJITO HOSPITAL, YOGYAKARTA-INDONESIA	Lisa Rosyida <i>Universitas Gadjah Mada Hospital, Indonesia</i>
PDL 040	Artery to fistula diameter ratio as a predictor of early re-occlusion of immature arteriovenous fistulas after balloon angioplasty	Hong Jin Bae <i>Cheongju St. Mary's Hospital, Korea</i>
PDL 041	CLINICAL ASPECTS OF TROPONIN I AND HIGH SENSITIVITY TROPONIN I IN PERITONEAL DIALYSIS PATIENTS	Ga Hee Lee <i>Gimhae Jungang Hospital, Korea</i>
PDL 042	Molecular adsorbent recirculating system (MARS) treatment in a patient with acute fatty liver of pregnancy; a case report	Yun Gyung Jang <i>Chonbuk National University Hospital, Korea</i>
PDL 043	Increased Monocyte-to-High-Density Lipoprotein Ratio is Associated with Recurrent Vascular Access Stenosis	Dong Ryul Kim <i>The Catholic University of Korea, Incheon St. Mary's Hospital, Korea</i>

Poster Presentation List

Presentation No.	Title	Presenting Author
PDL 044	The Effects of Repetitive Transcranial Magnetic Stimulation on Improvement of Mental Health and Clinical Parameters in Hemodialysis Patients – Pilot Study	Jin Ho Hwang <i>Chung-Ang University Hospital, Korea</i>
PDL 045	Relationship of different blood pressure measurements and left ventricular diastolic dysfunction in peritoneal dialysis patients	Yun Jung Oh <i>Cheju Halla General Hospital, Korea</i>
PDL 046	The effect of far infra-red (FIR) therapy on vascular access in hemodialysis	Dong Hyung Lee <i>Beomil Yonsei Clinic, Korea</i>
PDL 047	Comparison of lean mass indices as predictors of mortality in incident peritoneal dialysis patients	Seok Hui Kang <i>Yeungnam University Medical Center, Korea</i>
PDL 048	ASSOCIATION BETWEEN FOOD INTAKE, NUTRITIONAL STATUS, AND ADEQUACY OF HEMODYALYSIS, WITH ANEMIA IN REGULAR HEMODIALYSIS PATIENTS IN SARDJITO HOSPITAL	Dieta Lebe Singarimbun <i>Center of Population Study Gadjah Mada University, Indonesia</i>
PDL 049	A toe-brachial index (TBI) is a good predictor for cardiovascular diseases (CVD) in hemodialysis (HD) patients	Chika Niihara <i>ODA MEDICAL CLINIC, Japan</i>
PDL 050	Prevalence of positive interferon-gamma release assay among dialysis patients: a cross-section study in a tertiary care hospital in South Korea	Ye Na Kim <i>Kosin University College of Medicine, Korea</i>
PDL 051	The impact of protein provision on clinical outcomes in critically ill patient, receiving continuous renal replacement therapy	So Mi Kim <i>Dankook University Hospital, Korea</i>
PDL 052	PREDICTION OF VASCULAR ACCESS STENOSIS: BLOOD TEMPERATURE MONITORING WITH TWISTER VS STATIC INTRA-ACCESS PRESSURE RATIO	Jong Woo Yoon <i>Chuncheon Sacred Heart Hospital, Korea</i>
PDL 053	Effect of New Dialyzer TheraNova® on Uremic Pruritus in Patients on Maintenance Hemodialysis	Chang Hun Song <i>Chungnam National University Hospital, Korea</i>
 PDL 054	A randomized, open-label study to evaluate the efficacy and safety of plastic cannula compared with metal needle in incident hemodialysis patients	Jwa Kyung Kim <i>Hallym University Sacred Heart Hospital, Korea</i>
PDL 055	Association of Overhydration and Muscle Wasting measured by Bioelectrical impedance analysis and Mortality in Hemodialysis patients	Hyung Jong Kim <i>CHA University, Korea</i>
PDL 056	Prognostic value of Cyclophilin A with vascular events in peritoneal dialysis patients	Mi Jung Yoo <i>Inje University Haeundae Paik Hospital, Korea</i>


Presentation No.	Title	Presenting Author
PDL 057	Sodium thiosulfate treatment of calciphylaxis in end-stage renal disease patient	Young Min Yoon <i>Chosun University Hospital, Korea</i>
PDL 058	Sodium thiosulfate treatment of subcutaneous and vascular calcification in peritoneal dialysis patient	Ha Yeol Park <i>Chosun University Hospital, Korea</i>
PDL 059	The Long Inter-Dialytic Interval and Day-of-Week Mortality in a National Hemodialysis Cohort	Connie Rhee <i>University of California Irvine, United States</i>
PDL 060	The Risk Factors for Technique Failure in Continuous Ambulatory Peritoneal Dialysis Patients in Korea – 30 years' experience in a single center	Myung A Ha <i>The Catholic University of Korea, Bucheon St. Mary's Hospital, Korea</i>

May 18 (Fri)

Diabetes and Obesity

Presentation No.	Title	Presenting Author
PDO 001	A Comparative Study of Visceral fat and Subcutaneous fat by CT and correlation with BMI, biochemical parameters	Priya Haridas Anupama <i>Madras medical mission hospital, India</i>
PDO 002	Rho kinase signal pathway is likely responsible for mitochondrial oxidative damage and apoptosis induced by high glucose in renal tubular epithelial cells	Chunyang Ma <i>hainan general hospital, China</i>
PDO 003	Comparison of Diabetogenic Effect of Tacrolimus and CTLA4Ig in Streptozotocin-induced Diabetes Mellitus in Rats	Kang Luo <i>The Catholic University of Korea, Seoul St. Mary's Hospital, Korea</i>
PDO 004	The antioxidant nanoceria ameliorates diabetic podocyte injury by decreasing high glucose-induced oxidative stress	Se Hee Yoon <i>College of Medicine, Konyang University, Korea</i>
PDO 005	Changes in Body Mass Index and Incident Chronic Kidney Disease among general population: a community-based cohort study	Hae Ryoung Yun <i>Severance Hospital, Korea</i>
PDO 006	FORMULATION AND EVALUATION OF EMBELIN LOADED PECTIN NANOPARTICLES FOR THE TREATMENT OF DIABETES	Sourabh Jain <i>Bhagyoday Tirth Pharmacy College, India</i>
PDO 007	Intranasal delivery of insulin for the restoration of memory signaling in Alzheimer disease	Saurabh Bhargava <i>United Institute of Pharmacy, India</i>

Poster Presentation List

Presentation No.	Title	Presenting Author
PDO 008	Multifunctional Nanoconstructs for peroral delivery of Insulin	Mani Bhargava <i>ICFAI University, India</i>
PDO 009	PEGylated Glucose Triggered Liposomes for Insulin Delivery	Neha Kapoor <i>GTB Hospital, India</i>
PDO 010	Mucoadhesive Nanospheres based ocular delivery of Insulin	Nikhil Kapoor <i>Himalayan University, India</i>
PDO 011	Colon Specific Delivery of Insulin loaded Colloidosomes based on pH-dependent polymer	Mani Agarwal <i>IUD Dehradun, India</i>
PDO 012	EVALUATION OF ANTIDIABETIC AND HYPOLIPIDEMIC ACTIVITY OF CEDRUS DEODARA AND EMBELIA RIBES WITH THEIR SYNERGISTIC EFFECTS	Sourabh Jain <i>Bhagyoday Tirth Pharmacy College, India</i>
 PDO 013	Attenuated Lymphatic Proliferation Ameliorates Diabetic Nephropathy and High-Fat Diet-Induced Renal Lipotoxicity	Yaeni Kim <i>The Catholic University of Korea, Incheon St. Mary's Hospital, Korea</i>

May 19 (Sat)

Diabetes and Obesity

Presentation No.	Title	Presenting Author
PDO 014	DEVELOPMENT OF ANTIDIABETIC POLY HERBAL SUSTAINED RELEASE FORMULATION COMPOSED OF TRADITIONAL INDIAN PLANT EXTRACT WITH THEIR PROTECTIVE EFFECT ON ANTIOXIDANT ENZYME	Aakanchha Jain <i>Bhagyoday Tirth Pharmacy College, Sagar, India</i>
PDO 015	PREPARATION AND EVALUATION OF EUDRAGIT COATED CHITOSAN MICROPARTICLES FOR ORAL INSULIN DELIVERY	Aakanchha Jain <i>Bhagyoday Tirth Pharmacy College, Sagar, India</i>
PDO 016	α -Amylase And α -Glucosidase Inhibitors: A Novel Approach To Treat Diabetes	Poorva Jain <i>Bhagyoday Tirth Pharmacy College, Sagar, India</i>
PDO 017	Beneficial Role of Magnesium Valproate on Renal Complications Associated With Type I Diabetes in Rats	Samir Rabadiya <i>Saurashtra University, India</i>
PDO 018	An Association of prediabetes and development of chronic kidney disease from a 9-year prospective cohort study	Hyun Ho Oh <i>Inje University Sanggye Paik Hospital, Korea</i>
PDO 019	A novel TGF- β type I receptor inhibitor EW-7197 ameliorates high glucose-induced podocyte injury	Ah Reum Jeong <i>Soonchunhyang University Cheonan Hospital, Korea</i>

Presentation No.	Title	Presenting Author
PDO 020	Noninvasive fibrosis markers and chronic kidney disease and all-cause mortality in subjects with nonalcoholic fatty liver disease	Namju Heo <i>Seoul National University Hospital, Korea</i>
PDO 021	Role of Activating Transcription Factor 3 (ATF3) in diabetic nephropathy	Ho Lee <i>Korea University Ansan Hospital, Korea</i>
PDO 022	Novel Imeglimine derivatives exert protective action against diabetes induced nephropathy in experimental animal via inhibition of DPP-4	Udaya Pratap Singh <i>Sam Higginbottom University of Agriculture, Technology & Sciences, India</i>
PDO 023	Best fat depots determined by Dual-energy X-ray Absorptiometry (DXA) to be associated with cardiovascular risk, and insights to improve fat distribution: Korea National Health and Nutrition Examination Survey (KNHANES) 2008-2010	Sang Jin Jeon <i>Nowon Eulji Medical Center, Eulji University, Korea</i>
PDO 024	Clinicopathologic Association in Human Diabetic Kidney Disease -Analysis of Archive Kidney Tissue after Nephrectomy	Dong Eon Kim <i>Busan National University Hospital, Korea</i>
PDO 025	Involvement of Mas receptor In Palmitic Acid-induced Impaired Autophagy and ER Stress in HK2 cells	YongLun Kong <i>Zhongshan School of Medicine, Sun Yat-sen University, China</i>
PDO 026	Association between the modified DASH diet and metabolic syndrome in postmenopausal women without diabetes	Kei Kim Shin <i>Yeungnam University Medical Center, Korea</i>

May 18 (Fri)

Fluid, Electrolyte and Acid-Base

Presentation No.	Title	Presenting Author
PFL 001	Transient Pseudohypoaldosteronism in infants with urinary tract infection	Min-Hua Tseng <i>Chang Gung Memorial Hospital, Taiwan</i>
 PFL 002	Elucidating the Function ofWNKs on Pseudohypoaldosteronism Type II Caused by KLHL3 BTB Domain Mutation	Chien-Ming Lin <i>Tri-Service General Hospital, National Defense Medical Center, Taiwan</i>
PFL 003	Acute and Chronic Renal Tubular Response to SGLT2 Inhibitors in Diabetic Mice	Yu-Wei Fang <i>Shin Kong Wu Ho-Su Memorial Hospital, Taiwan</i>

Poster Presentation List

Presentation No.	Title	Presenting Author
PFL 004	Two cases of adefovir treatment associated nephrogenic hypophosphatemic osteomalacia in patients with chronic hepatitis B	Yong Jun Jang <i>Chonbuk National University Hospital, Korea</i>
PFL 005	Clinical Characteristics of Metformin-Associated Lactic Acidosis : Case Series in Single Center	You Hyun Jeon <i>Busan National University Hospital, Korea</i>
PFL 006	A Case Report of Hypercalcemia and Mucosal Injury after Calcium Chloride Intoxification	Kwang-Ho Choi <i>Chuncheon Sacred Heart Hospital, Korea</i>

May 19 (Sat)

Fluid, Electrolyte and Acid-Base

Presentation No.	Title	Presenting Author
PFL 007	The effects of changes in serum sodium concentration on prognosis in non-small cell lung cancer	Ji Eun Kim <i>Korea University Guro Hospital, Korea</i>
PFL 008	Malnutrition and Volume Status in Chronic Kidney Disease	Ga Hee Lee <i>Kimhae Jungang Hospital, Korea</i>
PFL 009	Expression of Renal Tubular Transporters in Urinary Exosomes from Patients with Acute and Chronic Hypokalemia	Chih-Chien Sung <i>Tri-Service General Hospital, National Defense Medical Center, Taiwan</i>
PFL 010	Sorting nexin 27 regulates the lysosomal degradation of AQP2 protein in kidney collecting duct	Eui-Jung Park <i>Kyungpook National University School of Medicine, Korea</i>
PFL 011	Cerebral Salt Wasting and Fludrocortisone in a Child with Lissencephaly, Holoprosencephaly, Cleft lip and Palate	Se Jin Park <i>Geoje Children's Hospital, Korea</i>
PFL 012	Hypomagnesemia as first clinical manifestation of 17q12 microdeletion including HNF1B	Minyoung Kim <i>The Catholic University of Korea, Yeouido St. Mary's Hospital, Korea</i>

May 18 (Fri)

Glomerular and Tubulointerstitial Disorders (CKD)

Presentation No.	Title	Presenting Author
PGN 001	Clinical meaning of C4d deposition in pediatric IgA nephropathy	Hee Sun Baek <i>Kyungpook National University Hospital, Korea</i>


Presentation No.	Title	Presenting Author
PGN 002	Validation and Assessment of Kidney failure risk equations in Korean population	Min Woo Kang <i>Seoul National University Hospital, Korea</i>
PGN 003	Outcomes and possible mechanism of acute tubulointerstitial nephritis	Dong Hwan Yun <i>Seoul National University Hospital, Korea</i>
PGN 004	Comparison of QoL between Autosomal dominant polycystic kidney disease (ADPKD) and Glomerulonephritis (GN) using propensity score matching (PSM): study in KNOW-CKD	Hyunsuk Kim <i>Chuncheon Sacred Heart Hospital, Korea</i>
PGN 005	Association Between Blood Pressure and the Progression of Chronic Kidney Disease in Patients with Glomerular Diseases: on behalf of the Korean Glomerular Disease Study Group	Sangmi Lee <i>Severance Hospital, Korea</i>
PGN 006	Prognostic value of mesangial C3 and C4d deposition in IgA nephropathy	Ki Heon Nam <i>Severance Hospital, Korea</i>
PGN 007	The primary cilium is necessary for the differentiation into myofibroblast in TGF- β 1-treated fibroblast	Su-Mi Kim <i>Kyung Hee University Hospital at Gangdong, Korea</i>
PGN 008	High renin-aldosterone ratio and lateralization index are associated with adverse renal outcomes in primary aldosteronism patients who underwent adrenalectomy	Jee Young Lee <i>Shinchon Yonsei Hospital, Korea</i>
PGN 009	C3 glomerulonephritis in Children	Ji Hyun Kim <i>Seoul National University Hospital, Korea</i>
PGN 010	Kidney diseases in elderly: renal biopsy data from one single chinese center over 30 years	Chen Pu <i>The PLA General Hospital, China</i>
PGN 011	Correlation between bone specific alkaline phosphatase with bone mineral density in kidney transplantation recipients	Hyung Duk Kim <i>The Catholic University of Korea, Seoul St. Mary's Hospital, Korea</i>
PGN 012	Soluble klotho as a marker of renal fibrosis and podocyte injuries in human kidneys	Nam-Jun Cho <i>Soonchunhyang University Cheonan Hospital, Korea</i>
PGN 013	A case of proliferative glomerulonephritis with monoclonal IgG and light chain deposit simultaneously showing pathologic features of membranous and membranoproliferative glomerulonephritis	Jong Hwan Jung <i>Wonkwang University Hospital, Korea</i>
PGN 014	Association of Proton Pump Inhibitor Use with Renal Outcomes in Patients with Coronary Artery Disease	Nam-Jun Cho <i>Soonchunhyang University Cheonan Hospital, Korea</i>

Poster Presentation List

Presentation No.	Title	Presenting Author
PGN 015	Renal involvement of inflammatory bowel diseases in children and adolescents: from Korean pediatric IBD cohort	Hee Sun Baek <i>Kyungpook National University Hospital, Korea</i>
PGN 016	A case of a 14-year-old girl with late diagnosed membranoproliferative glomerulonephritis	Euna Kim <i>Konkuk University Medical Center, Korea</i>

May 19 (Sat)

Glomerular and Tubulointerstitial Disorders (CKD)

Presentation No.	Title	Presenting Author
 PGN 017	Effect of long-term tubular overexpression of hypoxia-inducible factor-2 alpha on the progressive renal fibrosis in chronic kidney disease model	Kyoung Hye Kong <i>Ewha Womans University School of Medicine, Korea</i>
PGN 018	Renal biopsy & pathology together at OPD level without admission	Hyaejin Yun <i>MIRAE ING Kidneycenter, Korea</i>
PGN 019	Pathologically confirmed improved C3GN by MP-Pulse therapy	Sung-min Jung <i>MIRAE ING Kidney center, Korea</i>
PGN 020	Two cases of treated C1q nephropathy by MP-pulse therapy	Byoung-soo Cho <i>MIRAE ING Kidneycenter, Korea</i>
PGN 021	Rapidly progressive glomerulonephritis and small bowel ulcer bleeding with histologic confirmation in Microscopic polyangiitis	Woo Youn Eom <i>Ajou University Hospital, Korea</i>
PGN 022	TissueFAXS analysis as a novel method for semiquantitative assessment of intrarenal lymphocytes infiltration	Junseok Jeon <i>Samsung Medical Center, Korea</i>
PGN 023	Lysyl oxidase-like 2 inhibition ameliorates the progression of folic acid-induced renal tubulointerstitial fibrosis	Jisup Kim <i>Yonsei University College of Medicine, Korea</i>
PGN 024	Growth differentiation factor-15 as a independent predictor of idiopathic membranous nephropathy progression	Young Rok Ham <i>Chungnam National University Hospital, Korea</i>
PGN 025	A Case of IgG4-related Tubulointerstitial Nephritis (TIN) Mimicking Renal Infarction	Ji Won Lee <i>Konyang University Hospital, Korea</i>
PGN 026	IgA Nephropathy with Minimal Change Disease Associated with Primary Sjogren's Syndrome	Dong Jun Park <i>Gyeongsang National University Changwon Hospital, Korea</i>

Presentation No.	Title	Presenting Author
PGN 027	Conversion of asymptomatic quiescent IgA nephropathy presenting only isolated microscopic hematuria into rapidly progressive glomerulonephritis triggered by acute bacterial pyelonephritis	Dong Jun Park <i>Gyeongsang National University Changwon Hospital, Korea</i>
PGN 028	Omega 3 fatty acid ameliorate the puromycin induced podocyte injury	Jiwon Lee <i>Chungnam National University School of Medicine, Korea</i>
PGN 029	Microparticles derived from erythropoietin secreting mesenchymal stem cells attenuate TGF- β 1 induced epithelial-to-mesenchymal transition in MDCK cells	Mirae Lee <i>Gangnam Severance Hospital, Korea</i>
PGN 030	TonEBP regulates antigen presentation, T cell differentiation and phagocytic activity of macrophages in pristane-induced lupus nephritis	Eun Jin Yoo <i>UNIST, Korea</i>
PGN 031	Systemic lupus erythematosus and ANCA-associated glomerulonephritis: an overlap syndrome	Yire Kim <i>Gyeongsang National University Hospital, Korea</i>
PGN 032	Angiotensin II promotes podocyte apoptosis through the modulation of CD2AP and AMPK	Tae-Sun Ha <i>Chungbuk National University College of Medicine, Korea</i>

Hypertension and Vascular Biology

Presentation No.	Title	Presenting Author
PHV 001	Association of BP components with mortality and cardiovascular events in prehypertensive individuals: A Nationwide Population-Based Cohort Study	Hyung Jung Oh <i>Ewha Womans University Mokdong Hospital, Korea</i>
PHV 002	Study for the therapeutic standards of Korean hypertension: A nationwide population-based cohort study	Min-ho Kim <i>Ewha Womans University Mokdong Hospital, Korea</i>
PHV 003	The role of autophagy in neutrophil extracellular trap (NET) formation in chronic uremia	Jwa Kyung Kim <i>Hallym University College of Medicine, Korea</i>
PHV 004	Trends in Blood Pressure Levels in Korean Youth: Data from the Korea National Health and Nutrition Examination Survey	Yeonhee Lee <i>Samsung Medical Center, Korea</i>
PHV 005	Diminution of secreted frizzled-related protein 5 confers development of vascular calcification in chronic kidney disease	Ji Yong Jung <i>Gachon University Gil Medical Center, Korea</i>

Poster Presentation List

May 18 (Fri)

Inherited Kidney Disease (Pediatric nephrology)

Presentation No.	Title	Presenting Author
PIK 001	Acute inguinal pain in patient with autosomal dominant polycystic kidney disease undergoing hemodialysis	Jong Hwan Jung <i>Wonkwang University Hospital, Korea</i>
PIK 002	The functional consequence of S148L HNF1B mutation as a cause of bilateral renal hypodysplasia with MODY5	Kyong Hee Han <i>Jeju National University School of Medicine, Korea</i>
PIK 003	COMPREHENSIVE ANALYSIS FOR MUTATIONS IN A PATIENT WITH RENAL CELL CARCINOMA AND ADPKD	Kwang Eon Shim <i>Chuncheon Sacred Heart Hospital, Korea</i>
PIK 004	Genetic diagnosis of Systemic Lupus Erythematosus complicating hyper IgE syndrome	Beom Hee Lee <i>Asan Medical Center, University of Ulsan College of Medicine, Korea</i>
PIK 005	A novel missense mutation identified in a Korean family with X-linked Alport syndrome (AS) using next generation sequencing (NGS)	Songhee Oh <i>Soonchunhyang University Seoul Hospital, Korea</i>
PIK 006	Acquired cystic kidney disease in children and young adults undergoing dialysis	Myung Hyun Cho <i>Seoul National University Hospital, Korea</i>

Non-dialysis CKD

Presentation No.	Title	Presenting Author
PNO 001	Urinary CXCL16 and endostatin as biomarkers of tubulointerstitial fibrosis and rapid renal progression in patients with biopsy-proven advanced diabetic kidney disease	Yu Ho Lee <i>Kyung Hee University Hospital at Gangdong, Korea</i>
PNO 002	Microscopic hematuria is a risk factor of incident chronic kidney disease in the general population: a community-based prospective cohort study	Hyoungnae Kim <i>Severance Hospital, Korea</i>
PNO 003	Low dietary fat consumption is associated with increased CKD development risk in subjects with normal renal function: Community based prospective cohort study	Young Su Joo <i>Severance Hospital, Korea</i>
PNO 004	The effect of serum uric acid on renal function	Se Won Oh <i>Korea University Anam Hospital, Korea</i>

Presentation No.	Title	Presenting Author
PNO 005	Predictive factors for progression of chronic kidney disease in children: Results from a national cohort study	Yo Han Ahn <i>Seoul National University Bundang Hospital, Korea</i>
PNO 006	Low ankle brachial index is associated with cardiovascular events in patients with chronic kidney disease; result from the KNOW-CKD study	Chang Seong Kim <i>Chonnam National University Hospital, Korea</i>
PNO 007	Association between blood urea nitrogen to creatinine ratio and the risk of chronic kidney disease	Hyang Ki Min <i>Nowon Eulji Medical Center, Eulji University, Korea</i>
PNO 008	Clinical Significance of Heart Rate Variability for the monitoring of cardiac autonomic function in End-Stage Renal Disease Patients	Ji-Yeun Chang <i>The Catholic University of Korea, Seoul St. Mary's Hospital, Korea</i>
PNO 009	Lower income levels are associated with higher risk for developing chronic kidney disease: A nationwide cohort study	Cheol Ho Park <i>Yonsei University College of Medicine, Korea</i>
PNO 010	Association between plasma growth differentiation factor-15 levels and renal function in the elderly: Korean Frailty and Aging Cohort Study	Hyung Seok Ihm <i>Kyung Hee University School of Medicine, Korea</i>
PNO 011	Efficacy and safety of CKD-11101 compared with darbepoetin alpha in anemic chronic kidney disease patients not on dialysis	Jong Hoon Lee <i>The Catholic University of Korea, Seoul St. Mary's Hospital, Korea</i>
PNO 012	Association between serum lipid profiles and cardiovascular outcomes in CKD patients: KNOW-CKD study	Joohyung Ha <i>Yonsei University College of Medicine, Korea</i>
PNO 013	Physical activity is associated with the incident CKD in subjects with normal renal function: Community based prospective cohort study	Young Su Joo <i>Severance Hospital, Korea</i>
PNO 014	Association between serum lipid profiles and progression of CKD: KNOW-CKD study	Ki Heon Nam <i>Severance Hospital, Korea</i>
PNO 015	Urine Chloride levels are Associated with Chronic Kidney Disease Progression in Chronic Kidney Disease Patients	Cheol Ho Park <i>Severance Hospital, Korea</i>
PNO 016	Smoking and the risk of coronary artery calcification in patients with chronic kidney disease: The results from the KNOW-CKD	Mi Jung Lee <i>Bundang CHA Medical Center, Korea</i>

Poster Presentation List

Presentation No.	Title	Presenting Author
PNO 017	The Role of Non-Traditional Risk Factors and Biomarkers in Prediction of Cardiovascular Events and Mortality in Patients with Chronic Kidney Disease: The results from the KNOW-CKD	Young Su Joo <i>Severance Hospital, Korea</i>
PNO 018	The Framingham Score as a Useful Predictor of Incident Chronic Kidney Disease	Changhyun Lee <i>Severance Hospital, Korea</i>
PNO 019	Higher blood pressure increases the risk of mortality and progression to end-stage renal disease – multicenter large cohort study	Do Hyoung Kim <i>Hangang Sacred Heart Hospital, Korea</i>
PNO 020	Chemokine ligand 14 could be a potent biomarker of CKD progression	Sunhwa Lee <i>Seoul National University Hospital, Korea</i>
PNO 021	Association Between Combination of Anti-Hypertensive Drugs and Adverse Outcomes in Patients with Chronic Kidney Disease; The Results from the KNOW-CKD Study	Seon Yeong Lee <i>Severance Hospital, Korea</i>

May 19 (Sat)

Non-dialysis CKD

Presentation No.	Title	Presenting Author
PNO 022	A Diet Rich in Vegetables and Fruits and Incident Chronic Kidney Disease: Community-based prospective cohort study	Jong Hyun Jhee <i>Inha University School of Medicine, Korea</i>
PNO 023	Risk factors of proteinuria by ordinal logistic regression; Korean National Screening Data	Yu-Mi Yang <i>Chungbuk National University Hospital, Korea</i>
PNO 024	Observational descriptive analysis from the Korean Pediatric CKD Registry	Yo Han Ahn <i>Seoul National University Bundang Hospital, Korea</i>
PNO 025	Empirical treatment of UTIs by community pharmacists in Albania	Edmond Pistja <i>Medical Training Center Santa Maria, Albania</i>
PNO 026	Incidence Risk of Various Types of Digestive Cancers in Patients with Pre-Dialytic Chronic Kidney Disease: A Nationwide Population-Based Cohort Study	Hyung Jung Oh <i>Ewha Womans University Mokdong Hospital, Korea</i>
PNO 027	The impact of pre-dialytic chronic kidney disease or diabetes on the risk of colorectal cancer depends on sex	Hyung Jung Oh <i>Ewha Womans University Mokdong Hospital, Korea</i>




Presentation No.	Title	Presenting Author
PNO 028	Correlation between hyperuricemia and progression of chronic kidney disease: The results from the KNOW-CKD study	Tae Ryom Oh <i>Armed Force Yangju Hospital, Korea</i>
PNO 029	Effect of CKD on behavioral and recognition in the hippocampus	Hyo-Wook Gil <i>Soonchunhyang University Cheonan Hospital, Korea</i>
PNO 030	Hyperuricemia is an independently associated with left ventricular hypertrophy and left ventricular diastolic dysfunction in patients with chronic kidney disease	Il Young Kim <i>Pusan National University Yangsan Hospital, Korea</i>
PNO 031	The association between left atrial enlargement and the progression of chronic kidney disease: From the KNOW-CKD study	Sangmi Lee <i>Severance Hospital, Korea</i>
PNO 032	Prognostic impact of serum osteoprotegerin on renal disease progression in non-dialytic patients with chronic kidney disease	Chana Myoung <i>Chonnam National University Hospital, Korea</i>
PNO 033	Hand grip strength and chronic kidney disease: The Results from the Korea National Health and Nutrition Examination Survey 2014-2015	Young Youl Hyun <i>Kangbuk Samsung Hospital, Sungkyunkwan University School of Medicine, Korea</i>
PNO 034	Fibrotic burden in non-alcoholic fatty liver disease and the risk of development of chronic kidney disease	Mi Jung Lee <i>Bundang CHA Medical Center, Korea</i>
PNO 035	Effects of alkaline phosphatase on renal function deterioration and all-cause mortality	Eunjeong Kang <i>Seoul National University Hospital, Korea</i>
PNO 036	Relationship between soluble klotho and longitudinal changes of cardiac structure in CKD patients: Results from the KNOW-CKD Study	Hyo Jin Kim <i>Dongguk University Gyeongju Hospital, Korea</i>
PNO 037	Gut microbiota according to the stages of chronic kidney disease	Ji In Park <i>Kangwon National University Hospital, Korea</i>
PNO 038	Association between non-alcoholic fatty liver disease and coronary calcification in non-obese chronic kidney disease	Moon Hyoung Lee <i>Gangnam Severance Hospital, Korea</i>
PNO 039	The serum uric acid is an independent predictor of 1-year Renal outcomes in chronic kidney disease patients with hypertension	Jiwon Ryu <i>Cheju Halla General Hospital, Korea</i>

Poster Presentation List

Presentation No.	Title	Presenting Author
PN0 040	Non-alcoholic fatty liver disease is associated with low-grade albuminuria in men without diabetes mellitus	Jung Yoon Heo <i>Yeungnam University Medical Center, Korea</i>
PN0 041	Vitamin D deficiency is associated with erythropoietin deficiency and endogenous erythropoietin resistance in patients with chronic kidney disease	Il Young Kim <i>Pusan National University Yangsan Hospital, Korea</i>
PN0 042	Neutrophil to lymphocyte ratio is independently associated with arterial stiffness in patients with chronic kidney disease	June Hyun Kim <i>Pusan National University Yangsan Hospital, Korea</i>

May 18 (Fri)

Others

Presentation No.	Title	Presenting Author
POT 001	Chronic kidney disease of unknown etiology-South Asian region	Sneha Haridas Anupama <i>Sri Ramachandra Medical College, India</i>
POT 002	Data-driven Approaches for efficient drug discovery	Wan Kyu Kim <i>Ewha Womans University, Korea</i>
POT 003 	Age, Sex, and the Association of Chronic Kidney Disease With All-Cause Mortality in Buddhist Priests: An Analysis of the Standardized Mortality Ratio from the Korean Buddhist Priests Cohort	Yunmi Kim <i>Dongguk University Gyeongju Hospital, Korea</i>
POT 004	Bacteriological Profile and Antibiotic Resistance in Urinary tract infection patients	Mahadev Meena <i>AIIMS, Jodhpur, India</i>
POT 005	Serum bilirubin is a significant prognostic marker for renal progression and mortality in the patients with chronic kidney disease	Youngee Jung <i>SMG-SNU Boramae Medical Center, Korea</i>
POT 006	Breakfast skipping is associated with faster renal function decline in subjects with normal renal function: A community based prospective cohort study	Jeong Ho Joo <i>Yonsei University College of Medicine, Korea</i>
POT 007	Histological severity of non-alcoholic fatty liver disease is an early predictor for progressive renal dysfunction	Jung Nam An <i>SMG-SNU Boramae Medical Center, Korea</i>

Presentation No.	Title	Presenting Author
POT 008	Metabolomics based biomarkers as clinical outcome indicator in Minimal change diseases	Young Wook Choi SMG-SNU Boramae Medical Center, Korea
POT 009	The association between plasma PCSK9 concentrations and chronic kidney disease	Ha Yeon Kim Chonnam National University Hospital, Korea
POT 010	Reliability of appendicular muscle mass assessment by BIA versus DXA in hemodialysis patients	Kwon Soo Jung Gangnam Severance Hospital, Korea
POT 011	Vascular endothelial growth factor-A inhibits tumucamycin-induced endoplasmic reticulum stress and apoptosis in HK-2 cells	Woong Park Chonbuk National University Hospital, Korea
POT 012	Evaluation of spontaneous adverse drug reaction reporting related with nephrotoxicity and its causality assessment	Minjung Kang Seoul National University Hospital, Korea
POT 013	Positive renal outcomes of large volume paracentesis in liver cirrhotic patients with spontaneous bacterial peritonitis	Hafiz Abdul Basit Siddiqui Aga Khan University Hospital, Pakistan
POT 014	Early change in estimated GFR and renal outcome in patient with chronic kidney disease; comparison of creatinine-based and cystatin-C-based eGFR slope	Suhyun Kim Samsung Medical Center, Korea
POT 015	Monitoring globotriaosylsphingosine before and after enzyme replacement therapy in a patient with Fabry disease: A case report	Heejoon Jang Seoul National University Hospital, Korea
POT 016	A case of successful pregnancy and delivery after peritoneal dialysis in patient who was misdiagnosed as a primary infertility	Chi Young Choi Soonchunhyang University Cheonan Hospital, Korea

May 19 (Sat)

Others

Presentation No.	Title	Presenting Author
POT 017	Cancer Incidence and Mortality Among ESRD Patients Receiving Dialysis or Kidney Transplantation: a National Cohort Study in Korea	Young-Kyung Ko Konkuk University Medical Center, Korea
POT 018	The role of FXR in kidney autophagy for suppressing renal fibrosis	Dong-hyun Kim Chonnam National University Medical School, Korea


Poster Presentation List

Presentation No.	Title	Presenting Author
POT 019	A case of IgG4-related disease presented as a renal pelvis mass	Cheolgu Hwang <i>Busan National University Hospital, Korea</i>
POT 020	Nutritional status assessment of elderly patients in nursing home using bioimpedance spectroscopy: Interim analysis	Young Eun Kwon <i>Myongji Hospital, Korea</i>
POT 021	Screening hemodialysis patients for hepatitis C in Vietnam: the inconsistency between common hepatitis C virus serology and virology tests	Minh Cuong Duong <i>District 6 Hospital, Vietnam</i>
POT 022	Anatomical variants of the upper arm vein and their clinical implications in vascular access placement	Narae Joo <i>Hallym University Sacred Heart Hospital, Korea</i>
POT 023	6-bromo-indirubin-3'-oxime (6-BIO) attenuates lipopolysaccharide-induced inflammation and fibrosis through inhibition of Src tyrosine phosphorylation in the human renal proximal tubular epithelial cells	Jung Sun Park <i>Chonnam National University Medical School, Korea</i>
POT 024	Treatment of 6-bromo-indirubin-3'-oxime (6-BIO) attenuates inflammation of proximal tubular epithelial cells through suppression of adhesion molecules and monocyte chemoattractant protein-1 (MCP-1) in LPS-stimulated mononuclear cells	Jung Sun Park <i>Chonnam National University Medical School, Korea</i>
POT 025	The Expression of two isoforms of Matrix Metalloproteinase-2 in aged mouse models of Diabetes Mellitus and Chronic Kidney Disease	Sang Heon Song <i>Busan National University School of Medicine, Korea</i>
POT 026	Factors Affecting Hand Grip Strength In Chronic Kidney Disease Patients Undergoing Maintenance Hemodialysis In Dr. Sardjito Hospital Yogyakarta-Indonesia	Izzati Hayu Andari <i>Universitas Gadjah Mada, Indonesia</i>
POT 027	OVERVIEW STUDY: SUBJECTIVE GLOBAL ASSESSMENT AS A METHODE FOR MONITORING & EVALUATION OF MALNUTRITION STATUS WITHIN CHRONIC KIDNEY DISEASE PATIENT ON DIALYSIS	Chairil Fitri Hudayani <i>Dr. Cipto Mangunkusumo General Hospital, Indonesia</i>
POT 028	TWO YEARS STUDY OF NUTRITION COUNSELING INTERVENTION TO IMPROVE PROTEIN ENERGY INTAKE AND NUTRITION STATUS IN CHRONIC KIDNEY DISEASE ON HEMODIALYSIS	Yudhi Adrianto <i>Cipto Mangunkusumo, Indonesia</i>
POT 029	Vitamin D deficiency is a risk factor of hematuria: Korean National Health and Nutrition Examination Survey	Hyun Jin Ryu <i>Seoul National University College of Medicine, Korea</i>

Presentation No.	Title	Presenting Author
POT 030	Novel sclerosant foam for ablation and compression of polycystic kidney cyst	Soohyun Jeong <i>Seoul National University, Korea</i>
POT 031	Disease modeling of Karyomegalic Interstitial Nephritis using patient derived induced pluripotent stem cells	Kyoung-Woon Kim <i>The Catholic University of Korea, Seoul St. Mary's Hospital, Korea</i>
POT 032	Clinical predictors implicated in the incidence of Acute Pyelonephritis during Antepartum	Gang Jee Ko <i>Korea University Guro Hospital, Korea</i>

May 18 (Fri)

Transplantation

Presentation No.	Title	Presenting Author
PTL 001	Kidney transplant outcome in the patients with lupus nephritis	Yong Chul Kim <i>Seoul National University Hospital, Korea</i>
PTL 002	Clinical Significance of Use of Mycophenolate Mofetil in Kidney Transplant Recipients	Woo Yeong Park <i>Keimyung University School of Medicine, Keimyung University Kidney Institute, Korea</i>
PTL 003	Diagnostic and complication rate of acute appendicitis in kidney transplant recipients compared with general population	Sohyun Kwon <i>The Catholic University of Korea, Seoul St. Mary's Hospital, Korea</i>
PTL 004	Clinical significance of pretransplant HLA-DQ DSA positivity in kidney transplantation	Jong Hoon Lee <i>The Catholic University of Korea, Seoul St. Mary's Hospital, Korea</i>
 PTL 005	Is body mass index a significant independent risk factor for graft failure and patient death in the modern immunosuppressive era?	Ho Sik Shin <i>Kosin University Gospel Hospital, Korea</i>
PTL 006	Development of De Novo Anti-HLA Antibodies in Kidney Transplant Recipients	Ho Sik Shin <i>Kosin University Gospel Hospital, Korea</i>
PTL 007	ABO-incompatibility lower incidence of DSA-induced antibody-mediated rejection	Dong Ryeol Lee <i>Maryknoll Medical Center, Korea</i>
PTL 008	Assessing Belatacept Against Tacrolimus in renal Transplantation: A systemic review and meta-analysis (A BLATANT Study)	Kumar Jayant <i>Sudha Hospital and Medical Research Centre, India</i>

Poster Presentation List

Presentation No.	Title	Presenting Author
PTL 009	ABO-incompatibility lower incidence of DSA-induced antibody-mediated rejection	Dong Ryeol Lee <i>Maryknoll Medical Center, Korea</i>
PTL 010	Elimination of chronic hepatitis B in a kidney transplantation recipient via lamivudine monotherapy: A case report	Mun Jang <i>Yemidam hospital, Korea</i>
PTL 011	Remission of uremic thrombocytopenia that was resistant to Eltrombopag after kidney transplantation	Jin Ho Lee <i>Bon seng Hospital, Korea</i>
PTL 012	Bleeding complications post ultrasound guided renal graft biopsy- a single center experience from Pakistan	Rabeea Azmat <i>Aga Khan Universty Hospital, Pakistan</i>
PTL 013	Bilateral Conjunctival Mucosa-associated Lymphoid Tissue Type Lymphoma in a Kidney Transplant Recipient	Eun Young Ji <i>The Catholic University of Korea, Seoul St. Mary's Hospital, Korea</i>
PTL 014	Combination of area under curve of estimated glomerular filtration rate for 2 years and annual rate change of estimated glomerular filtration rate predicts long-term graft survival in kidney transplants	Eun Jeong Lee <i>Samsung Medical Center, Korea</i>
PTL 015	Urinary Proteomic Biomarkers for Prediction of Chronic Antibody-mediated Rejection in Kidney Transplant Recipients	Hee-Yeon Jung <i>Kyungpook National University Hospital, Korea</i>
PTL 016	A case of liver cirrhosis caused by chronic B hepatitis after kidney transplantation in an HBsAg negative recipient	Ayoung Cho <i>Presbyterian Medical Center, Korea</i>
PTL 017	Clinical Significance of C4d by Kidney Allograft Biopsies on Post-transplant Clinical Outcomes	Woo Yeong Park <i>Keimyung University School of Medicine, Keimyung University Kidney Institute, Korea</i>
PTL 018	CD137L signaling is a checkpoint in renal inflammation	Jong Soo Lee <i>Ulsan University Hospital, Korea</i>

May 19 (Sat)

Transplantation

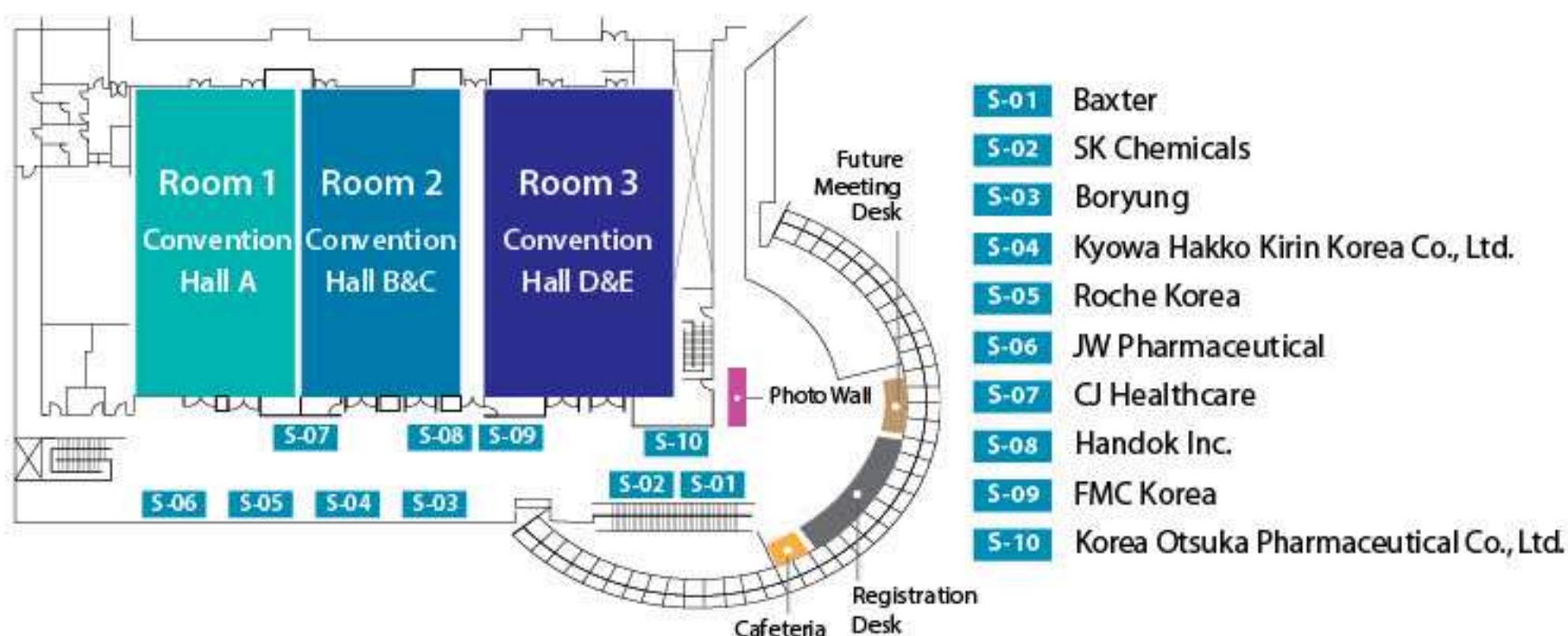
Presentation No.	Title	Presenting Author
PTL 019	Efficacy of the C3d assay for Prediction of Antibody-mediated Rejection in Kidney Transplant Recipients with Donor Specific Anti-HLA Antibodies	Woo Yeong Park Keimyung University School of Medicine, Keimyung University Kidney Institute, Korea
PTL 020	Successful renal transplantation for a peritoneal dialysis patient with peritoneal fibrosis	Hee Yeoun Kim Bon seng Hospital, Korea
PTL 021	Impact of an Anastomosis Time on Transplant Outcomes in Deceased Donor Kidney Transplantation	Kye Hwa Jeong Kyungpook National University Hospital, Korea
PTL 022	The short term outcome of deceased donor kidney transplantation with short cold ischemic time is comparable to that of living donor kidney transplantation	Miyeun Han Busan National University Hospital, Korea
PTL 023	Impact of donor age on outcome of kidney transplantation from deceased donor with histologic acute kidney injury	Ki Joon Lim Korea University Anam Hospital, Korea
PTL 024	Effect of HLA-DQ epitope mismatch on Development of De Novo Donor-Specific HLA Antibodies after Kidney Transplantation	Kyung Sun Park Ulsan University Hospital, Korea
PTL 025	Changes in native kidney size after kidney transplantation of polycystic kidney disease patients	Dong Yeol Lee Bon seng Hospital, Korea
PTL 026	Prognostic value of urinary cytokines & chemokines in early renal outcome after kidney transplantation	Minjung Kim Samsung Medical Center, Korea
PTL 027	Asymptomatic allograft pyelonephritis in a renal transplant recipient	A Young Kim Yeungnam University Medical Center, Korea
PTL 028	A case of Sirolimus-induced De Novo Focal Segmental Glomerulosclerosis in Kidney Transplant Recipient	Sang Mok Yeo Keimyung University Dongsan Medical Center, Korea
PTL 029	Acute femoral neuropathy following kidney transplantation: a case report	Joon Hyuk Seo Yeungnam University Medical Center, Korea
PTL 030	Synergic effects of epigallocatechin gallate and dipeptidyl peptidase IV inhibitor on tacrolimus-induced nephrotoxicity in mice	Byung Chul Shin Chosun University Hospital, Korea

Poster Presentation List

Presentation No.	Title	Presenting Author
PTL 031	Successful treatment of invasive gastric mucormycosis in kidney transplant recipient	Hyun Woo Kim <i>Chosun University Hospital, Korea</i>
PTL 032	Extraperitoneal urine leak without oliguria after renal transplantation	Jihye Kwak <i>Gyeongsang National University Hospital, Korea</i>
PTL 033	CD137-CD137L interactions regulate B-cell autoimmunity during alloimmune responses	Jong Soo Lee <i>Ulsan University Hospital, Korea</i>
PTL 034	Successful renal transplantation in simultaneous positive crossmatch and ABO incompatible living donor	Ji Ae Yang <i>Chosun University Hospital, Korea</i>
PTL 035	Empirical indications for pre-transplant kidney biopsy to deceased donors	Min Ji Kim <i>Inje University Busan Paik Hospital, Korea</i>
PTL 036	Change of gut microbiome after kidney transplantation: Korean prospective study	Hyunjeong Cho <i>Chungbuk National University Hospital, Korea</i>

Exhibition

Convention Centre 4F



Convention Centre 3F



Sponsors

Platinum



Gold



Silver



Memo

Memo

Memo

Memo





Prescription Drug

Classification 392 : Antidote

"I can smile big with capsule form"



Tidy and Precise~!

Capsule form dialysis delaying treatment agent

Renamezin
(Spherical carbonaceous adsorbent) 



Capsule form dialysis
delaying treatment agent



Portable packing



Able to take exact amount
(2g) without granule loss



Korea-origin raw material
Manufacture in Korea

Daewon Daewon Pharm. Co., Ltd.

386 Cheonhodaero, Sungdong-gu, Seoul, Korea Tel) +82-2-2204-7000
Fax) +82-2-498-9108 Website) www.daewonpharm.com





Chong Kun Dang
Pharm. Seoul, Korea

“TacroBell®”

aiming at global medicine



TacroBell® Cap.
(Tacrolimus 0.25 / 0.5 / 1mg)

- ✓ 0.25mg strength launched for the first time in the world
- ✓ Patented using newly developed concept of Solid Dispersion technology
- ✓ Biological equivalence proved through clinical trials
- ✓ Efficacy and safety proved by Phase IV clinical trials to patients of kidney or liver transplantation

Participation hospitals in clinical trials:

Asan Medical Center, Chonbuk National University Hospital, Chonnam National University Hospital, Samsung Medical Center, Seoul National University Hospital, Seoul St. Mary's Hospital, Severance Hospital, Hallym University Medical Center, Hanyang University Medical Center, Keimyung University Dongsan Medical Center (listed in alphabetical order)

이유있는 처방율 1위!

왜, 대한민국 많은 의사들은 칼리메트를 처방 할까요?
대한민국의 대표적인 고칼륨혈증치료제-근화칼리메트는 5 μ m이하의
레진 미립자 함유량을 0.1% 이하로 제조되고 있으며
최고의 안전성을 배려한 레진 제제이기 때문입니다

5 μ m이하의 레진 미립자는 장내 점막을 경유하여 체내흡수가 될 수 있으며
이는 세포 침착에 의하여 전염병 및 알레르기를 일으킬 가능성이 있습니다

- Payne, J. M. et al : Nature, 188, 586, 1960 -

Kalimate®

Calcium Polystyrene Sulfonate

Before you start, stop.

Because the benefits should accumulate. Not the risks.

Renvela® is an effective first-line monotherapy for controlling serum phosphorus in dialysis patients - without calcium or metal¹ accumulation. Sevelamer shows a 46% reduction in all-cause mortality compared with CBBs for CKD patients.²



Renvela tab. (Sevelamer carbonate) Renvela powder 0.8g (Sevelamer carbonate) Composition Active ingredient: Sevelamer Carbonate 800mg (In-House Monograph) **Indications** The control of serum phosphorus in patients with chronic kidney disease (CKD) on dialysis. **Dosage and Administration** Renvela should be given three times a day with meals. Mix one sachet in at least 30mL of water. Must be administered within 30 minutes of mixing, and resuspended before administration. **Patients Not Taking a Phosphate Binder** The recommended starting dose of Renvela is 0.8 to 1.6 g with meals based on serum phosphorus level. Serum phosphorus level 5.5 - 7.5 mg/dL: 1 tablet(s) each day; three times daily with meals. Serum phosphorus level > 7.5 mg/dL: 2 tablet(s) each day; three times daily with meals. **Switching from Sevelamer Hydrochloride Tablets** For patients switching from sevelamer hydrochloride tablets to sevelamer carbonate tablets or powder, use the same dose in grams. Further titration may be necessary to achieve desired phosphorus levels. The highest daily dose of sevelamer carbonate studied was 14 grams in CKD patients on dialysis. **Switching from Sevelamer Carbonate tablets to sachets or from sachets to tablets** For patients switching from sevelamer carbonate tablets to sevelamer carbonate sachets or from sevelamer carbonate sachets to sevelamer carbonate tablets, use the same dose in grams. Further titration to the desired phosphorus levels necessary to achieve desired phosphorus levels. **Switching from Calcium Acetate** Calcium Acetate 667 mg 1 tablet, three times daily; 1 tablet or sachet, three times daily. Calcium Acetate 667 mg 2 tablets, three times daily; 2 tablets or sachets, three times daily. Calcium Acetate 667 mg 3 tablets, three times daily. **Dose Titration for All Patients Taking Renvela** Titrate the Renvela dose by 0.8 g three times per day with meals at two-week intervals as necessary with the goal of controlling serum phosphorus within the target range. **Contraindication** Hypersensitivity to the active substance or to any of the excipients. Hypophosphatemia. Bowel obstruction (There is a risk of intestinal perforation due to swelling in intestinal). **Precaution** Patient having bowel obstruction and constipation (There is a risk of bowel obstruction and perforation due to swelling in intestinal). **Adverse reactions** - In a study in hemodialysis patients, the adverse reactions on sevelamer carbonate tablets were similar to those reported for sevelamer hydrochloride. In another cross-over study in hemodialysis patients, the adverse reactions on sevelamer carbonate powder were similar to those reported for sevelamer hydrochloride. - In a study of sevelamer hydrochloride, overall adverse reactions among those treated with sevelamer hydrochloride occurring in > 5% of patients included: vomiting (22%), nausea (20%), diarrhea (19%), dyspepsia (16%), abdominal pain (15%), flatulence (15%) and constipation (15%). - In study for peritoneal dialysis patients using sevelamer hydrochloride, most adverse reactions were similar to adverse reactions observed in hemodialysis patients. - The following adverse reactions have been identified during post-approval use of sevelamer carbonate and sevelamer hydrochloride: hypersensitivity, pruritus, rash, abdominal pain, fecal impaction, and uncommon cases of ileus, intestinal obstruction, and intestinal perforation. Appropriate medical management should be given to patients who develop constipation or have worsening of existing constipation to avoid severe complications.
* For more details, please refer to the product package insert.

Reference 1. Renvela FDA label revised March 2016 2. Patel L et al. Clin J Am Nephrol 2016; 11(2):232-244

Renvela®
sevelamer carbonate
Right from the start™

C7109.FA88:18.03.0152:04.021



Power Start

24시간 강력한 혈압 강하


edarbi
azilsartan medoxomil
40mg·80mg tablets

Reference 1. William B. White, et al. Effects of the Angiotensin Receptor Blocker Azilsartan Medoxomil Versus Olmesartan and Valsartan on Ambulatory and Clinic Blood Pressure in Patients With Stages 1 and 2 Hypertension, Hypertension 2011;57:413-420.

Prescribing Information 【제품명】 이달비정40밀리그램(아질사르탄 메독소밀칼륨) / 이달비정80밀리그램(아질사르탄 메독소밀칼륨) 【유효성분】 아질사르탄 메독소밀칼륨 42.68mg (아질사르탄 메독소밀로 85.36mg (아질사르탄 메독소밀로서 80mg) 【효능·효과】 본태성 고혈압 【용법·용량】 성인 : 이 약의 권장 초회용량은 1일 1회 40밀리그램이며, 식사와 관계없이 투여한다. 이 용량에서 혈압이 적절히 조절되지 않는 경우 1일 최대 80밀리그램까지 증량할 수 있다. 혈압강화효과는 치료 시작 후 2주 이내에 나타내며, 약 4주 정도에 최대효과가 나타난다. 이 약 단독 투여로 혈압이 조절되지 않는 경우, 다른 혈압강화제(이노제에: 클로르탈리돈, 히드로클로로티아지드)나 칼슘채널차단제와 병용투여 시 추가적인 혈압강화효과가 나타날 수 있다. 【사용상의 주의사항】 1. 경고 임신 2, 3기인 임부에 레닌-안지오텐신계(Renin-Angiotensin System, RAS)에 직접적으로 작용하는 약을 투여 시 태아 및 신생아에게 손상 및 사망까지 유발할 수 있다. 따라서 임신으로 확인될 경우 즉시 이 약의 투여를 중단해야 한다. 2. 다음 환자에는 투여하지 말 것 1) 이 약 또는 이 약에 함유된 성분에 대하여 과민증이 있는 환자 2) 임부 3) 다음의 환자에게 이 약과 알리스키렌 제제의 병용투여: 당뇨병 환자 또는 중등증-중증의 신장장애(사구체여과율 <60mL/min/1.73m²) 환자 【저장방법】 차광기밀용기, 실온(1~30℃) 보관, 습기를 피하여 보관 【수입자】 한국다케다제약주식회사(서울특별시 강남구 테헤란로98길8, 12층) 【제조사】 Takeda Pharmaceutical Company Ltd. (Japan)
* 이 내용은 허가사항을 요약한 것으로 자세한 정보는 제품의 첨부문서 또는 <http://drug.mfds.go.kr>를 확인하십시오.

3rd generation; Vasodilating β -blocker



네비스톨 정 1.25mg/2.5mg/5mg

Nebivolol

NEBISTOL

Dual Acting of highly selective β_1 -blocking
and Nitric Oxide Activity ¹⁾

High β_1 -Selectivity(Cardioselectivity) ²⁾
without bronchoconstriction via inhibition of β_2 -adrenoceptors

Vasodilating Properties ³⁾
By stimulating basal endothelial nitrate oxide release

1) Drugs. 2010;70(1):41-56

2) Br J Pharmacol. 2001;133(8):1330-8

3) Circulation 2001;104(5):511-4

제조사



에리슨제약(주)

판매자

KPP (주)경풍약품

Does continuous
monitoring
give more **security?**



Dialog⁺ and Adimea[®]

Monitoring the dialysis dose continuously
and in real-time

Only those who are aware of the nature of the path are able to reach their destination safely and quickly.

Adimea[®] stands for Accurate Dialysis Measurement (precise measurement of the dialysis conditions). This real-time measurement system is able to determine the Kt/V precisely in any given dialysis treatment scenario.

The measuring principle of this innovative system from B. Braun is simple: a UV light sensor installed in the dialysate drain of the Dialog⁺ machine measures the absorption of light and thus changes in the concentration of uremic substances as they drain off.

This means that insufficient dosages are identified immediately.

The advantages are obvious: the user is able to adjust relevant parameters during treatment so as to model the Kt/V, meaning efficient and optimized dialysis treatment is guaranteed for the patient at all times and without any detours. That's for sure.

B | BRAUN
SHARING EXPERTISE

B. Broun Korea | 13Fl. West Wing 440 Teheran-ro | Gangnam-gu Seoul | Korea
Tel. 02-3459-7700 | www.bbraun.co.kr
dialysis@bbraun.com | www.bbraun-dialysis.com



Real evidence of efficacy

아달라트® 오로스는 지난 20년간 다양한 임상시험을 통해
고혈압 환자에 대한 효과와 안전성 프로파일을 입증 해 왔습니다.

- INSIGHT study를 통해, 1일 1회 복용으로 24시간 일정하고 안정된 혈압조절 효과 입증¹
- ACTION study를 통해, 안정형 협심증을 동반한 고혈압 환자에서 장기기간(5년) 혈압강하효과 입증²
- 한국 환자*를 대상으로 실시한 FOCUS study를 통해, 단독 및 병용 요법 모두에서 우수한 혈압조절 효과 입증³

*저용량 항고혈압제 단독요법으로 혈압조절이 어려운 고혈압 환자

아달라트® 오로스정

【제품명】 아달라트 오로스정 30/60 **【주성분】** 30: 1정(297.2mg) 중 니페디핀(미분화) 33mg, 60: 1정(562.9mg) 중 니페디핀(미분화) 66mg **【효능·효과】** 1. 관상동맥상질완전상완혈관협착증 2. 고혈압 **【용법·용량】** 서용에는 30 mg 또는 60mg을 하루 한번씩 통상 7~14일 간 투여하면서 환자의 상태에 따라 용량을 조절한다. 고혈압: 치료 시작시에 20 mg이나 30 mg을 권장한다. 약물의 혈중 농도가 유효농도에서 도달하므로 환자의 상황을 자주 측정하여 적정기간을 단축할 수 있다. 최고 120 mg을 초과하지 않도록 한다. 반드시 환자의 증상에 따라서 조절되어야 한다. 식사(공복 및 식사후)와 무관하게 투여 할 수 있다. (자세한 내용은 제품설명서를 참고하시기 바랍니다) **【사용상의 주의사항】** 1. 다음 환자에는 투여하지 말 것 1) 이 약에 과민증의 병력이 있는 환자 2) 임부 또는 임신하고 있을 가능성이 있는 부인, 수유부 3) 심인성 속 환자 4) 불안정형 협심증 환자 (단, 제품의 효능·효과가 "협심증" 및 "유식사의 협심증"에 해당되는 제제인 경우 제외) 5) 저혈압 (수축기압 90 mmHg 미만) 환자 6) 중증의 대동맥판막협착증 환자 7) 리팜피신을 투여받고 있는 환자 8) 급성 심근경색 (9일 이내) 환자 9) 직접정맥수술 후 회절조루술을 받은 곡낭(kock pouch)환자 **【주요 이상반응】** 1) 간장: 때때로 AST, ALT, ALP 상승등 간기능 검사치이상, 2) 비뇨기계: 때때로 BUN 상승 3) 순환기계: 때때로 흉통, 허혈성 동통 (특히 치료 초기나 용량증가시), 심근경색, 때때로 안면홍조, 열감, 심계항진, 협심증, 가림성 저혈압, 하지부종, 말초부종, 저혈압, 혈관확장 4) 정신신경계: 때때로 두중, 두통, 어지러움, 권태감, 신경쇠약, 감각이상, 불쾌감 5) 소화기계: 때때로 구역, 구토, 변비, 소화불량 6) 과민증: 때때로 발진, 가려움 기 피부: 홍피증 (박리성피부염) 8) 골격근: 때때로 하지강직 9) 구강: 연설에 장애 치은비후 10) 전신: 때때로 불면감, 부종, 복통, 하지부종, 동통 11) 호흡기계: 때때로 호흡곤란 **【전문의약품】** **【수입 및 판매처】** 바이엘코리아(주) **【개정년월일】** 2014.08.22

보다 자세한 사항은 제품설명서 전문 또는 바이엘 웹사이트, <http://www.bayer.co.kr>를 참고하시기 바랍니다.

Reference 1. Mancia G, Ombari S, Parati G; Investigators of the INSIGHT ABPM substudy. Twenty-four hour ambulatory blood pressure in the International Nifedipine GITS Study Intervention as a Goal in Hypertension Treatment (INSIGHT). *J Hypertens*. 2002 Mar;20(3):545-53. 2. Lubsen J, Wagener G, Kirwan BA et al. Effect of long-acting nifedipine on mortality and cardiovascular morbidity in patients with symptomatic stable angina and hypertension: the ACTION trial. *J Hypertens*. 2005 Mar;23(3):641-8. 3. Park JB, Ha JW, Jung HO, Rhee MY; FOCUS Investigators Randomized trial comparing the effects of a low-dose combination of nifedipine GITS and valsartan versus high-dose monotherapy on central hemodynamics in patients with inadequately controlled hypertension: FOCUS study. *Blood Press Monit*. 2014 Oct;19(5):294-301



**FRESENIUS
MEDICAL
CARE**

콩팥병 환자의 치료와 보다 나은 삶을 위한 **반세기 동안의 헌신**,
(주)프레제니우스메디칼케어는 앞으로도 계속 이어 가겠습니다.

Fresenius Medical Care

KSN²⁰¹⁸

Seoul, Korea · May 17 - 20

**The 38th Annual Meeting of
the Korean Society of Nephrology**

Grand Hilton Seoul, Seoul, Korea

A New Milestone for Nephrology

KSN 2019

**The 39th Annual Meeting of
the Korean Society of Nephrology**

May 23 (Thu) - 26 (Sun), 2019
Seoul Dragon City, Seoul, Korea

Silver Sponsors

Daewon 대원제약

Chong Sun Bang
Pharm. Chong Sun Bang

Alvogen

SANOFI GENZYME

SANOFI

Takeda
Takeda Pharmaceuticals Korea CO., LTD.

NOVARTIS

KSN 2018 Secretariat

InSession International Convention Services, Inc.
4Fl. 10, Yeoksam-ro 7-gil, Gangnam-Gu, Seoul, 06244, Korea
Tel. +82-2-3452-7199 Fax. +82-2-521-8683 E-mail. office@ksnmeeting.kr